



# INDUSTRIAL & COMMERCIAL LADDERS



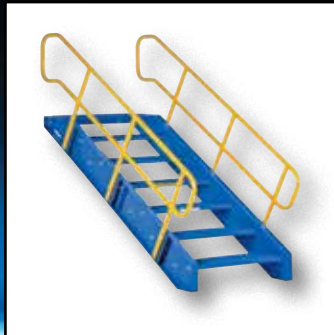
**STANDARD SLOPE LADDERS**



**SPRING LOADED LADDERS**



**CROSS-OVER LADDERS**



**MODULAR STAIRWAYS**



**ROLLING STEP STOOLS**



**STEP-MATE STANDS**

|                                    |   |       |          |
|------------------------------------|---|-------|----------|
| Rolling Warehouse Ladders          | ▼ | ..... | 230-231  |
| Standard Slope Ladders             | ▼ | ..... | 232      |
| Tip-N-Roll Mobile Ladders          | ▼ | ..... | 233      |
| Roll-A-Fold Ladders                | ▼ | ..... | 234      |
| Spring Loaded Ladders              | ▼ | ..... | 234      |
| Maintenance Ladders                | ▼ | ..... | 235      |
| Modular Steel Work Platform System | ▼ | ..... | 235, 248 |
| Alternating Tread Stairs           | ▼ | ..... | 236      |
| Mezzanine Ladders                  | ▼ | ..... | 236, 247 |
| Cross-Over Ladders                 | ▼ | ..... | 237-238  |
| Aluminum Ladders & Stands          | ▼ | ..... | 239-240  |
| Fiberglass Ladders                 | ® | ..... | 241      |
| Step Ladders & Stands              | ▼ | ..... | 242-243  |
| Adjustable Stands                  | ▼ | ..... | 244-246  |



model LAD-6-14-P shown with LAD-GATE-58 option



OPTIONAL LADDER SAFETY GATE



CASTER FOOT LEVER



model LAD-6-14-P-EZ shown with LAD-GATE-50-EZ option

## Rolling Warehouse Ladders (6 to 11 Step)

Finally an easy and safe solution for reaching products on high shelves. Constructed of square tubing framework, which handles uniform capacities up to 350 pounds. Units feature a 58° climb angle and EZ models feature a 50° climb angle. The handrail height is 30". Each step is 24" wide by 7" deep. Choose either grip strut style or perforated style steps. Front wheels are 10" diameter. Unique design allows ladder to separate for shipping and storage. Welded steel construction with powder coat finish. Manufactured in compliance with OSHA 1910.29 and ANSI A14.7 standards. Units are shipped knockdown, some assembly required.

Optional safety gate sold separately to help keep children and unauthorized personnel off the ladder. Activating the caster foot lever will lift the gate into an upright position and engage the casters on the floor. This deters access to the ladder and allows the ladder to be moved. Pushing the gate forward will disengage the casters from the floor and allow for safe access to the ladder.

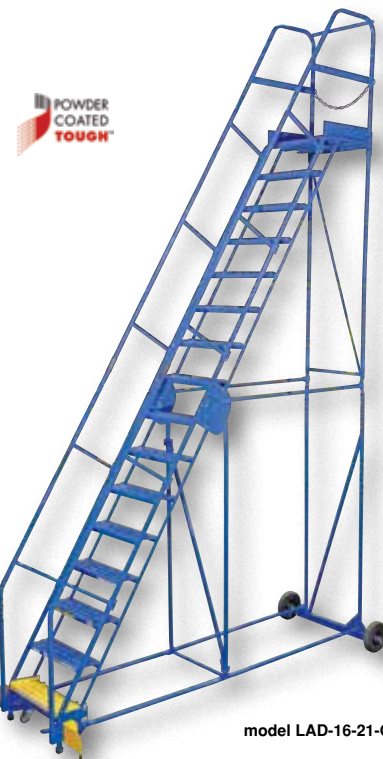
| MODEL NUMBER                  | NO. OF STEPS                        | TOP STEP HEIGHT | OVERALL HEIGHT | BASE SIZE (W x D)    | TOP STEP DEPTH | WEIGHT (POUND) |
|-------------------------------|-------------------------------------|-----------------|----------------|----------------------|----------------|----------------|
| <b>GRIP STRUT STEPS - 58°</b> |                                     |                 |                |                      |                |                |
| LAD-6-14-G                    | 6                                   | 60"             | 90"            | 34 1/4" x 53 15/16"  | 14"            | 249            |
| LAD-7-14-G                    | 7                                   | 70"             | 100"           | 34 1/4" x 60 1/16"   | 14"            | 286            |
| LAD-8-14-G                    | 8                                   | 80"             | 110"           | 34 1/4" x 66 15/16"  | 14"            | 288            |
| LAD-9-14-G                    | 9                                   | 90"             | 120"           | 34 1/4" x 72 11/16"  | 14"            | 322            |
| LAD-10-14-G                   | 10                                  | 100"            | 130"           | 34 1/4" x 78 15/16"  | 14"            | 336            |
| LAD-11-14-G                   | 11                                  | 110"            | 140"           | 34 1/4" x 85 1/16"   | 14"            | 367            |
| LAD-6-21-G                    | 6                                   | 60"             | 90"            | 34 1/4" x 60"        | 21"            | 252            |
| LAD-7-21-G                    | 7                                   | 70"             | 100"           | 34 1/4" x 66 15/16"  | 21"            | 302            |
| LAD-8-21-G                    | 8                                   | 80"             | 110"           | 34 1/4" x 72 5/8"    | 21"            | 312            |
| LAD-9-21-G                    | 9                                   | 90"             | 120"           | 34 1/4" x 78 15/16"  | 21"            | 342            |
| LAD-10-21-G                   | 10                                  | 100"            | 130"           | 34 1/4" x 85 3/16"   | 21"            | 354            |
| LAD-11-21-G                   | 11                                  | 110"            | 140"           | 34 1/4" x 91 1/4"    | 21"            | 396            |
| <b>PERFORATED STEPS - 58°</b> |                                     |                 |                |                      |                |                |
| LAD-6-14-P                    | 6                                   | 60"             | 90"            | 34 1/4" x 53 15/16"  | 14"            | 252            |
| LAD-7-14-P                    | 7                                   | 70"             | 100"           | 34 1/4" x 60 1/16"   | 14"            | 266            |
| LAD-8-14-P                    | 8                                   | 80"             | 110"           | 34 1/4" x 66 15/16"  | 14"            | 292            |
| LAD-9-14-P                    | 9                                   | 90"             | 120"           | 34 1/4" x 72 11/16"  | 14"            | 318            |
| LAD-10-14-P                   | 10                                  | 100"            | 130"           | 34 1/4" x 78 15/16"  | 14"            | 341            |
| LAD-11-14-P                   | 11                                  | 110"            | 140"           | 34 1/4" x 85 1/16"   | 14"            | 371            |
| LAD-6-21-P                    | 6                                   | 60"             | 90"            | 34 1/4" x 60"        | 21"            | 276            |
| LAD-7-21-P                    | 7                                   | 70"             | 100"           | 34 1/4" x 66 15/16"  | 21"            | 293            |
| LAD-8-21-P                    | 8                                   | 80"             | 110"           | 34 1/4" x 72 5/8"    | 21"            | 296            |
| LAD-9-21-P                    | 9                                   | 90"             | 120"           | 34 1/4" x 78 15/16"  | 21"            | 322            |
| LAD-10-21-P                   | 10                                  | 100"            | 130"           | 34 1/4" x 85 3/16"   | 21"            | 360            |
| LAD-11-21-P                   | 11                                  | 110"            | 140"           | 34 1/4" x 91 1/4"    | 21"            | 392            |
| <b>GRIP STRUT STEPS - 50°</b> |                                     |                 |                |                      |                |                |
| LAD-6-14-G-EZ                 | 6                                   | 60"             | 90"            | 34 1/4" x 62 3/8"    | 14"            | 212            |
| LAD-7-14-G-EZ                 | 7                                   | 70"             | 100"           | 34 1/4" x 70 7/8"    | 14"            | 237            |
| LAD-8-14-G-EZ                 | 8                                   | 80"             | 110"           | 34 1/4" x 85 9/16"   | 14"            | 260            |
| LAD-9-14-G-EZ                 | 9                                   | 90"             | 120"           | 34 1/4" x 91 1/2"    | 14"            | 281            |
| LAD-10-14-G-EZ                | 10                                  | 100"            | 130"           | 34 1/4" x 97 11/16"  | 14"            | 344            |
| LAD-11-14-G-EZ                | 11                                  | 110"            | 140"           | 34 1/4" x 103 7/8"   | 14"            | 376            |
| LAD-6-21-G-EZ                 | 6                                   | 60"             | 90"            | 34 1/4" x 70 15/16"  | 21"            | 223            |
| LAD-7-21-G-EZ                 | 7                                   | 70"             | 100"           | 34 1/4" x 78 15/16"  | 21"            | 248            |
| LAD-8-21-G-EZ                 | 8                                   | 80"             | 110"           | 34 1/4" x 91 9/16"   | 21"            | 271            |
| LAD-9-21-G-EZ                 | 9                                   | 90"             | 120"           | 34 1/4" x 97 3/4"    | 21"            | 292            |
| LAD-10-21-G-EZ                | 10                                  | 100"            | 130"           | 34 1/4" x 103 15/16" | 21"            | 348            |
| LAD-11-21-G-EZ                | 11                                  | 110"            | 140"           | 34 1/4" x 110 7/8"   | 21"            | 390            |
| <b>PERFORATED STEPS - 50°</b> |                                     |                 |                |                      |                |                |
| LAD-6-14-P-EZ                 | 6                                   | 60"             | 90"            | 34 1/4" x 62 3/8"    | 14"            | 210            |
| LAD-7-14-P-EZ                 | 7                                   | 70"             | 100"           | 34 1/4" x 70 7/8"    | 14"            | 235            |
| LAD-8-14-P-EZ                 | 8                                   | 80"             | 110"           | 34 1/4" x 85 5/16"   | 14"            | 257            |
| LAD-9-14-P-EZ                 | 9                                   | 90"             | 120"           | 34 1/4" x 91 1/2"    | 14"            | 279            |
| LAD-10-14-P-EZ                | 10                                  | 100"            | 130"           | 34 1/4" x 97 11/16"  | 14"            | 304            |
| LAD-11-14-P-EZ                | 11                                  | 110"            | 140"           | 34 1/4" x 103 7/8"   | 14"            | 387            |
| LAD-6-21-P-EZ                 | 6                                   | 60"             | 90"            | 34 1/4" x 70 15/16"  | 21"            | 221            |
| LAD-7-21-P-EZ                 | 7                                   | 70"             | 100"           | 34 1/4" x 78 15/16"  | 21"            | 246            |
| LAD-8-21-P-EZ                 | 8                                   | 80"             | 110"           | 34 1/4" x 91 9/16"   | 21"            | 268            |
| LAD-9-21-P-EZ                 | 9                                   | 90"             | 120"           | 34 1/4" x 97 3/4"    | 21"            | 348            |
| LAD-10-21-P-EZ                | 10                                  | 100"            | 130"           | 34 1/4" x 103 15/16" | 21"            | 356            |
| LAD-11-21-P-EZ                | 11                                  | 110"            | 140"           | 34 1/4" x 110 7/8"   | 21"            | 387            |
| <b>OPTIONS</b>                |                                     |                 |                |                      |                |                |
| LAD-GATE-58                   | FOOT ACTIVATED SAFETY GATE 58°      |                 |                |                      |                | 44             |
| LAD-GATE-50-EZ                | FOOT ACTIVATED SAFETY GATE 50° - EZ |                 |                |                      |                | 45             |
| LAD-TT-B                      | TOOL TRAY                           |                 |                |                      |                | 14             |

## Rolling Warehouse Ladders (12 to 16 Step)

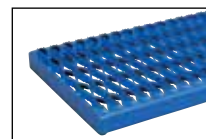
Finally an easy and safe solution for reaching products on high shelves. Each ladder is rated at 350 pounds uniform capacity. Units feature a 58° climb angle and the EZ models features a 50° climb angle. The handrail height is 36" from the top step and around the top step a 4" toeboard is included. Each step is 24" wide by 7" deep. Choose either grip strut style or perforated style steps. Front wheels are 3" diameter. Side frame is constructed from welded square tubular steel and offers maximum strength. Unique design allows ladder to separate for shipping and storage. Welded steel construction with baked-in powder-coated toughness. Manufactured in compliance with OSHA 1910.29 and ANSI A14.7 standards.

Optional safety gate sold separately to help keep children and unauthorized personnel off the ladder. Activating the caster floor lever will lift the gate into an upright position. Pushing the gate forward will disengage the casters from the floor and allow for safe access to the ladder.

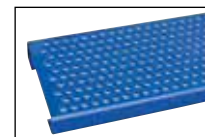
| MODEL NUMBER                  | NO. OF STEPS                       | TOP STEP HEIGHT | OVERALL HEIGHT | BASE SIZE (W x D)                          | TOP STEP DEPTH | WEIGHT (POUND) |
|-------------------------------|------------------------------------|-----------------|----------------|--|----------------|----------------|
| <b>GRIP STRUT STEPS - 58°</b> |                                    |                 |                |  |                |                |
| LAD-12-14-G                   | 12                                 | 120"            | 156"           | 34 $\frac{1}{4}$ " x 91 $\frac{5}{16}$ "   | 14"            | 391            |
| LAD-13-14-G                   | 13                                 | 130"            | 166"           | 42 $\frac{1}{4}$ " x 95 $\frac{9}{16}$ "   | 14"            | 441            |
| LAD-14-14-G                   | 14                                 | 140"            | 176"           | 42 $\frac{1}{4}$ " x 101 $\frac{7}{8}$ "   | 14"            | 466            |
| LAD-15-14-G                   | 15                                 | 150"            | 186"           | 42 $\frac{1}{4}$ " x 108"                  | 14"            | 489            |
| LAD-16-14-G                   | 16                                 | 160"            | 196"           | 42 $\frac{1}{4}$ " x 115 $\frac{1}{4}$ "   | 14"            | 522            |
| LAD-12-21-G                   | 12                                 | 120"            | 156"           | 34 $\frac{1}{4}$ " x 97 $\frac{1}{2}$ "    | 21"            | 414            |
| LAD-13-21-G                   | 13                                 | 130"            | 166"           | 42 $\frac{1}{4}$ " x 102 $\frac{9}{16}$ "  | 21"            | 457            |
| LAD-14-21-G                   | 14                                 | 140"            | 176"           | 42 $\frac{1}{4}$ " x 108 $\frac{7}{8}$ "   | 21"            | 482            |
| LAD-15-21-G                   | 15                                 | 150"            | 186"           | 42 $\frac{1}{4}$ " x 115"                  | 21"            | 505            |
| LAD-16-21-G                   | 16                                 | 160"            | 196"           | 42 $\frac{1}{4}$ " x 122 $\frac{1}{4}$ "   | 21"            | 527            |
| <b>PERFORATED STEPS - 58°</b> |                                    |                 |                |  |                |                |
| LAD-12-14-P                   | 12                                 | 120"            | 156"           | 34 $\frac{1}{4}$ " x 91 $\frac{5}{16}$ "   | 14"            | 388            |
| LAD-13-14-P                   | 13                                 | 130"            | 166"           | 42 $\frac{1}{4}$ " x 95 $\frac{9}{16}$ "   | 14"            | 472            |
| LAD-14-14-P                   | 14                                 | 140"            | 176"           | 42 $\frac{1}{4}$ " x 101 $\frac{7}{8}$ "   | 14"            | 478            |
| LAD-15-14-P                   | 15                                 | 150"            | 186"           | 42 $\frac{1}{4}$ " x 108"                  | 14"            | 490            |
| LAD-16-14-P                   | 16                                 | 160"            | 196"           | 42 $\frac{1}{4}$ " x 115 $\frac{1}{4}$ "   | 14"            | 507            |
| LAD-12-21-P                   | 12                                 | 120"            | 156"           | 34 $\frac{1}{4}$ " x 97 $\frac{1}{2}$ "    | 21"            | 402            |
| LAD-13-21-P                   | 13                                 | 130"            | 166"           | 42 $\frac{1}{4}$ " x 102 $\frac{9}{16}$ "  | 21"            | 453            |
| LAD-14-21-P                   | 14                                 | 140"            | 176"           | 42 $\frac{1}{4}$ " x 108 $\frac{7}{8}$ "   | 21"            | 478            |
| LAD-15-21-P                   | 15                                 | 150"            | 186"           | 42 $\frac{1}{4}$ " x 115"                  | 21"            | 501            |
| LAD-16-21-P                   | 16                                 | 160"            | 196"           | 42 $\frac{1}{4}$ " x 122 $\frac{1}{4}$ "   | 21"            | 552            |
| <b>GRIP STRUT STEPS - 50°</b> |                                    |                 |                |  |                |                |
| LAD-12-14-G-EZ                | 12                                 | 120"            | 156"           | 34 $\frac{1}{4}$ " x 110 $\frac{7}{8}$ "   | 14"            | 434            |
| LAD-13-14-G-EZ                | 13                                 | 130"            | 166"           | 42 $\frac{1}{4}$ " x 120 $\frac{7}{8}$ "   | 14"            | 453            |
| LAD-14-14-G-EZ                | 14                                 | 140"            | 176"           | 42 $\frac{1}{4}$ " x 128 $\frac{1}{16}$ "  | 14"            | 502            |
| LAD-15-14-G-EZ                | 15                                 | 150"            | 186"           | 42 $\frac{1}{4}$ " x 136 $\frac{5}{16}$ "  | 14"            | 505            |
| LAD-16-14-G-EZ                | 16                                 | 160"            | 196"           | 42 $\frac{1}{4}$ " x 144 $\frac{13}{16}$ " | 14"            | 527            |
| LAD-12-21-G-EZ                | 12                                 | 120"            | 156"           | 34 $\frac{1}{4}$ " x 121 $\frac{7}{16}$ "  | 21"            | 416            |
| LAD-13-21-G-EZ                | 13                                 | 130"            | 166"           | 42 $\frac{1}{4}$ " x 127 $\frac{7}{8}$ "   | 21"            | 478            |
| LAD-14-21-G-EZ                | 14                                 | 140"            | 176"           | 42 $\frac{1}{4}$ " x 135 $\frac{1}{16}$ "  | 21"            | 496            |
| LAD-15-21-G-EZ                | 15                                 | 150"            | 186"           | 42 $\frac{1}{4}$ " x 143 $\frac{5}{16}$ "  | 21"            | 521            |
| LAD-16-21-G-EZ                | 16                                 | 160"            | 196"           | 42 $\frac{1}{4}$ " x 151 $\frac{13}{16}$ " | 21"            | 542            |
| <b>PERFORATED STEPS - 50°</b> |                                    |                 |                |  |                |                |
| LAD-12-14-P-EZ                | 12                                 | 120"            | 156"           | 34 $\frac{1}{4}$ " x 110 $\frac{7}{8}$ "   | 14"            | 398            |
| LAD-13-14-P-EZ                | 13                                 | 130"            | 166"           | 42 $\frac{1}{4}$ " x 120 $\frac{7}{8}$ "   | 14"            | 450            |
| LAD-14-14-P-EZ                | 14                                 | 140"            | 176"           | 42 $\frac{1}{4}$ " x 128 $\frac{1}{16}$ "  | 14"            | 476            |
| LAD-15-14-P-EZ                | 15                                 | 150"            | 186"           | 42 $\frac{1}{4}$ " x 136 $\frac{5}{16}$ "  | 14"            | 501            |
| LAD-16-14-P-EZ                | 16                                 | 160"            | 196"           | 42 $\frac{1}{4}$ " x 144 $\frac{13}{16}$ " | 14"            | 523            |
| LAD-12-21-P-EZ                | 12                                 | 120"            | 156"           | 34 $\frac{1}{4}$ " x 121 $\frac{7}{16}$ "  | 21"            | 413            |
| LAD-13-21-P-EZ                | 13                                 | 130"            | 166"           | 42 $\frac{1}{4}$ " x 127 $\frac{7}{8}$ "   | 21"            | 465            |
| LAD-14-21-P-EZ                | 14                                 | 140"            | 176"           | 42 $\frac{1}{4}$ " x 135 $\frac{1}{16}$ "  | 21"            | 492            |
| LAD-15-21-P-EZ                | 15                                 | 150"            | 186"           | 42 $\frac{1}{4}$ " x 143 $\frac{5}{16}$ "  | 21"            | 516            |
| LAD-16-21-P-EZ                | 16                                 | 160"            | 196"           | 42 $\frac{1}{4}$ " x 151 $\frac{13}{16}$ " | 21"            | 538            |
| <b>OPTIONS</b>                |                                    |                 |                |  |                |                |
| LAD-GATE-58                   | FOOT ACTIVATED SAFETY GATE 58°     |                 |                |  |                | 44             |
| LAD-GATE-50-EZ                | FOOT ACTIVATED SAFETY GATE 50° -EZ |                 |                |  |                | 45             |
| LAD-TT-B                      | TOOL TRAY                          |                 |                |  |                | 14             |



model LAD-16-21-G



GRIP STRUT STEP



PERFORATED STEP



model LAD-16-21-G shown with LAD-GATE-58 option



model LAD-PW-26-2-P-NHR



## Standard Slope Ladders

Portable Warehouse Ladders for every-day use applications. Heavy-duty uniform weight capacity is 350 lb. Features 58° standard climb angle. Choose either Perforated or Grip-Strut steps. Step depth is 7" with a top step depth of 14". Welded square tubular steel construction with powder coat blue finish. Rubber feet provided for floor protection. Units with 2-5 steps have two (2) all directional spring-loaded swivel casters and two (2) swivel casters with total locks. Units with 6 to 12 steps have bottom step lock casters for safe use when climbing. Ships knockdown. Ladders comply with OSHA 1910.29, ANSI A14.7 standards.

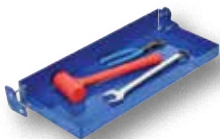
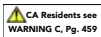
The ESD-Safe Design features anti-static properties; conductive semi-gloss black baked-in powder-coated toughness, conductive wheels which features gray rubber tread on polyolefin core, and grounding drag chain with resistor, nickel-plated brass construction. Note ladders must be used on conductive floors to comply with ESD properties. Ladders comply with OSHA 1910.29, ANSI A14.7, ANSI S20.20 standards.



model LAD-PW-26-6-G



**BOTTOM STEP LOCKS CASTERS FOR SAFE CLIMBING ON UNITS WITH 6 TO 12 STEPS**



model LAD-TT-B



model ESD-WGW



model ESD-HGW

| NO. OF STEPS             | TOP STEP (W x D)                         | OVERALL (W x D x H)  | WEIGHT (POUND) | MODEL NUMBER            | MODEL NUMBER      |
|--------------------------|--|--|----------------|-------------------------|-------------------|
| <b>NO HANDRAIL</b>       |  |  |                | <b>GRIP STRUT STEPS</b> |                   |
|                          |  |  |                | <b>PERFORATED STEPS</b> |                   |
| 2                        | 16 <sup>13</sup> / <sub>16</sub> " x 14" | 20 <sup>7</sup> / <sub>8</sub> " x 25 <sup>1</sup> / <sub>16</sub> " x 20"   | 79             | LAD-PW-18-2-G-NHR       | LAD-PW-18-2-P-NHR |
| 3                        | 16 <sup>13</sup> / <sub>16</sub> " x 14" | 20 <sup>7</sup> / <sub>8</sub> " x 31 <sup>9</sup> / <sub>16</sub> " x 30"   | 89             | LAD-PW-18-3-G-NHR       | LAD-PW-18-3-P-NHR |
| 4                        | 16 <sup>13</sup> / <sub>16</sub> " x 14" | 20 <sup>7</sup> / <sub>8</sub> " x 38 <sup>5</sup> / <sub>8</sub> " x 40"    | 102            | LAD-PW-18-4-G-NHR       | LAD-PW-18-4-P-NHR |
| 2                        | 23 <sup>9</sup> / <sub>16</sub> " x 14"  | 27 <sup>5</sup> / <sub>8</sub> " x 25 <sup>1</sup> / <sub>16</sub> " x 20"   | 92             | LAD-PW-26-2-G-NHR       | LAD-PW-26-2-P-NHR |
| 3                        | 23 <sup>9</sup> / <sub>16</sub> " x 14"  | 27 <sup>5</sup> / <sub>8</sub> " x 31 <sup>9</sup> / <sub>16</sub> " x 30"   | 101            | LAD-PW-26-3-G-NHR       | LAD-PW-26-3-P-NHR |
| 4                        | 23 <sup>9</sup> / <sub>16</sub> " x 14"  | 27 <sup>5</sup> / <sub>8</sub> " x 38 <sup>5</sup> / <sub>8</sub> " x 40"    | 115            | LAD-PW-26-4-G-NHR       | LAD-PW-26-4-P-NHR |
| 2                        | 30 <sup>1</sup> / <sub>4</sub> " x 14"   | 34 <sup>5</sup> / <sub>16</sub> " x 25 <sup>1</sup> / <sub>16</sub> " x 20"  | 95             | LAD-PW-32-2-G-NHR       | LAD-PW-32-2-P-NHR |
| 3                        | 30 <sup>1</sup> / <sub>4</sub> " x 14"   | 34 <sup>5</sup> / <sub>16</sub> " x 31 <sup>9</sup> / <sub>16</sub> " x 30"  | 111            | LAD-PW-32-3-G-NHR       | LAD-PW-32-3-P-NHR |
| 4                        | 30 <sup>1</sup> / <sub>4</sub> " x 14"   | 34 <sup>5</sup> / <sub>16</sub> " x 38 <sup>5</sup> / <sub>8</sub> " x 40"   | 128            | LAD-PW-32-4-G-NHR       | LAD-PW-32-4-P-NHR |
| <b>HANDRAIL INCLUDED</b> |  |  |                | <b>GRIP STRUT STEPS</b> |                   |
|                          |  |  |                | <b>PERFORATED STEPS</b> |                   |
| 2                        | 16 <sup>13</sup> / <sub>16</sub> " x 14" | 20 <sup>7</sup> / <sub>8</sub> " x 34 <sup>1</sup> / <sub>16</sub> " x 50"   | 95             | LAD-PW-18-2-G           | LAD-PW-18-2-P     |
| 3                        | 16 <sup>13</sup> / <sub>16</sub> " x 14" | 20 <sup>7</sup> / <sub>8</sub> " x 34 <sup>5</sup> / <sub>16</sub> " x 60"   | 124            | LAD-PW-18-3-G           | LAD-PW-18-3-P     |
| 4                        | 16 <sup>13</sup> / <sub>16</sub> " x 14" | 20 <sup>7</sup> / <sub>8</sub> " x 40 <sup>7</sup> / <sub>16</sub> " x 70"   | 134            | LAD-PW-18-4-G           | LAD-PW-18-4-P     |
| 5                        | 16 <sup>13</sup> / <sub>16</sub> " x 14" | 20 <sup>7</sup> / <sub>8</sub> " x 47 <sup>5</sup> / <sub>16</sub> " x 80"   | 150            | LAD-PW-18-5-G           | LAD-PW-18-5-P     |
| 2                        | 23 <sup>9</sup> / <sub>16</sub> " x 14"  | 27 <sup>5</sup> / <sub>8</sub> " x 34 <sup>1</sup> / <sub>16</sub> " x 50"   | 104            | LAD-PW-26-2-G           | LAD-PW-26-2-P     |
| 3                        | 23 <sup>9</sup> / <sub>16</sub> " x 14"  | 27 <sup>5</sup> / <sub>8</sub> " x 34 <sup>5</sup> / <sub>16</sub> " x 60"   | 118            | LAD-PW-26-3-G           | LAD-PW-26-3-P     |
| 4                        | 23 <sup>9</sup> / <sub>16</sub> " x 14"  | 27 <sup>5</sup> / <sub>8</sub> " x 40 <sup>7</sup> / <sub>16</sub> " x 70"   | 133            | LAD-PW-26-4-G           | LAD-PW-26-4-P     |
| 5                        | 23 <sup>9</sup> / <sub>16</sub> " x 14"  | 27 <sup>5</sup> / <sub>8</sub> " x 47 <sup>5</sup> / <sub>16</sub> " x 80"   | 150            | LAD-PW-26-5-G           | LAD-PW-26-5-P     |
| 2                        | 30 <sup>1</sup> / <sub>4</sub> " x 14"   | 34 <sup>5</sup> / <sub>16</sub> " x 34 <sup>1</sup> / <sub>16</sub> " x 50"  | 112            | LAD-PW-32-2-G           | LAD-PW-32-2-P     |
| 3                        | 30 <sup>1</sup> / <sub>4</sub> " x 14"   | 34 <sup>5</sup> / <sub>16</sub> " x 34 <sup>5</sup> / <sub>16</sub> " x 60"  | 128            | LAD-PW-32-3-G           | LAD-PW-32-3-P     |
| 4                        | 30 <sup>1</sup> / <sub>4</sub> " x 14"   | 34 <sup>5</sup> / <sub>16</sub> " x 40 <sup>7</sup> / <sub>16</sub> " x 70"  | 146            | LAD-PW-32-4-G           | LAD-PW-32-4-P     |
| 5                        | 30 <sup>1</sup> / <sub>4</sub> " x 14"   | 34 <sup>5</sup> / <sub>16</sub> " x 47 <sup>5</sup> / <sub>16</sub> " x 80"  | 167            | LAD-PW-32-5-G           | LAD-PW-32-5-P     |
| <b>HANDRAIL INCLUDED</b> |  |  |                | <b>GRIP STRUT STEPS</b> |                   |
|                          |  |  |                | <b>PERFORATED STEPS</b> |                   |
| 6                        | 16 <sup>13</sup> / <sub>16</sub> " x 14" | 23 <sup>13</sup> / <sub>16</sub> " x 50 <sup>1</sup> / <sub>8</sub> " x 90"  | 183            | LAD-PW-18-6-G           | LAD-PW-18-6-P     |
| 7                        | 16 <sup>13</sup> / <sub>16</sub> " x 14" | 23 <sup>13</sup> / <sub>16</sub> " x 56 <sup>1</sup> / <sub>4</sub> " x 100" | 201            | LAD-PW-18-7-G           | LAD-PW-18-7-P     |
| 6                        | 23 <sup>9</sup> / <sub>16</sub> " x 14"  | 29 <sup>3</sup> / <sub>4</sub> " x 50 <sup>3</sup> / <sub>16</sub> " x 90"   | 220            | LAD-PW-26-6-G           | LAD-PW-26-6-P     |
| 7                        | 23 <sup>9</sup> / <sub>16</sub> " x 14"  | 29 <sup>3</sup> / <sub>4</sub> " x 56 <sup>5</sup> / <sub>16</sub> " x 100"  | 237            | LAD-PW-26-7-G           | LAD-PW-26-7-P     |
| 8                        | 23 <sup>9</sup> / <sub>16</sub> " x 14"  | 29 <sup>3</sup> / <sub>4</sub> " x 63 <sup>3</sup> / <sub>16</sub> " x 110"  | 255            | LAD-PW-26-8-G           | LAD-PW-26-8-P     |
| 9                        | 23 <sup>9</sup> / <sub>16</sub> " x 14"  | 29 <sup>3</sup> / <sub>4</sub> " x 68 <sup>15</sup> / <sub>16</sub> " x 120" | 304            | LAD-PW-26-9-G           | LAD-PW-26-9-P     |
| 10                       | 23 <sup>9</sup> / <sub>16</sub> " x 14"  | 30 <sup>9</sup> / <sub>16</sub> " x 75 <sup>1</sup> / <sub>8</sub> " x 130"  | 308            | LAD-PW-26-10-G          | LAD-PW-26-10-P    |
| 11                       | 23 <sup>9</sup> / <sub>16</sub> " x 14"  | 33 <sup>9</sup> / <sub>16</sub> " x 81 <sup>3</sup> / <sub>8</sub> " x 140"  | 316            | LAD-PW-26-11-G          | LAD-PW-26-11-P    |
| 12                       | 23 <sup>9</sup> / <sub>16</sub> " x 14"  | 33 <sup>9</sup> / <sub>16</sub> " x 87 <sup>5</sup> / <sub>8</sub> " x 156"  | 324            | LAD-PW-26-12-G          | LAD-PW-26-12-P    |
| 6                        | 30 <sup>1</sup> / <sub>4</sub> " x 14"   | 38 <sup>15</sup> / <sub>16</sub> " x 50 <sup>1</sup> / <sub>8</sub> " x 90"  | 224            | LAD-PW-32-6-G           | LAD-PW-32-6-P     |
| 7                        | 30 <sup>1</sup> / <sub>4</sub> " x 14"   | 38 <sup>15</sup> / <sub>16</sub> " x 56 <sup>1</sup> / <sub>4</sub> " x 100" | 250            | LAD-PW-32-7-G           | LAD-PW-32-7-P     |
| 8                        | 30 <sup>1</sup> / <sub>4</sub> " x 14"   | 38 <sup>15</sup> / <sub>16</sub> " x 63 <sup>3</sup> / <sub>8</sub> " x 110" | 304            | LAD-PW-32-8-G           | LAD-PW-32-8-P     |
| 9                        | 30 <sup>1</sup> / <sub>4</sub> " x 14"   | 38 <sup>15</sup> / <sub>16</sub> " x 68 <sup>7</sup> / <sub>8</sub> " x 120" | 356            | LAD-PW-32-9-G           | LAD-PW-32-9-P     |
| 10                       | 30 <sup>1</sup> / <sub>4</sub> " x 14"   | 38 <sup>15</sup> / <sub>16</sub> " x 75 <sup>1</sup> / <sub>8</sub> " x 130" | 362            | LAD-PW-32-10-G          | LAD-PW-32-10-P    |
| 11                       | 30 <sup>1</sup> / <sub>4</sub> " x 14"   | 38 <sup>15</sup> / <sub>16</sub> " x 81 <sup>3</sup> / <sub>8</sub> " x 140" | 372            | LAD-PW-32-11-G          | LAD-PW-32-11-P    |
| 12                       | 30 <sup>1</sup> / <sub>4</sub> " x 14"   | 38 <sup>15</sup> / <sub>16</sub> " x 87 <sup>5</sup> / <sub>8</sub> " x 156" | 394            | LAD-PW-32-12-G          | LAD-PW-32-12-P    |
| <b>ESD - SAFE DESIGN</b> |  |  |                | <b>GRIP STRUT STEPS</b> |                   |
|                          |  |  |                | <b>PERFORATED STEPS</b> |                   |
| 2                        | 23 <sup>9</sup> / <sub>16</sub> " x 14"  | 27 <sup>3</sup> / <sub>16</sub> " x 34 <sup>1</sup> / <sub>16</sub> " x 50"  | 101            | LAD-PW-26-2-G-ESD       | ---               |
| 4                        | 23 <sup>9</sup> / <sub>16</sub> " x 14"  | 27 <sup>3</sup> / <sub>16</sub> " x 40 <sup>7</sup> / <sub>16</sub> " x 70"  | 110            | LAD-PW-26-4-G-ESD       | ---               |
| 6                        | 23 <sup>9</sup> / <sub>16</sub> " x 14"  | 29 <sup>3</sup> / <sub>4</sub> " x 50 <sup>3</sup> / <sub>16</sub> " x 90"   | 227            | LAD-PW-26-6-G-ESD       | ---               |
| 8                        | 23 <sup>9</sup> / <sub>16</sub> " x 14"  | 29 <sup>3</sup> / <sub>4</sub> " x 63 <sup>3</sup> / <sub>16</sub> " x 110"  | 261            | LAD-PW-26-8-G-ESD       | ---               |
| 10                       | 23 <sup>9</sup> / <sub>16</sub> " x 14"  | 33 <sup>9</sup> / <sub>16</sub> " x 75 <sup>1</sup> / <sub>8</sub> " x 130"  | 308            | LAD-PW-26-10-G-ESD      | ---               |
| 12                       | 23 <sup>9</sup> / <sub>16</sub> " x 14"  | 33 <sup>9</sup> / <sub>16</sub> " x 87 <sup>5</sup> / <sub>8</sub> " x 156"  | 370            | LAD-PW-26-12-G-ESD      | ---               |

| <b>OPTIONS</b> |   |
|----------------|---|
| MODEL NUMBER   | DESCRIPTION   |
| LAD-TT-A       | LADDER TOOL TRAY FOR PREFIX LAD-PW-18                         |
| LAD-TT-B       | LADDER TOOL TRAY FOR PREFIX LAD-PW-26                         |
| LAD-TT-C       | LADDER TOOL TRAY FOR PREFIX LAD-PW-32                         |
| LAD-TT-E       | LADDER TOOL TRAY FOR PREFIX LAD-PW-ESD                        |
| ESD-WGW        | OPTIONAL USER GROUNDING STRAP, ELASTIC ADJUSTABLE WRIST STRAP |
| ESD-HGW        | OPTIONAL USER GROUNDING STRAP, HEEL STRAP                     |
| ESD-GW-15      | OPTIONAL LADDER TETHERED GROUNDING STRAP; 15 FT. COIL CORD    |

## Tip-N-Roll Mobile Ladders

These ladders are available in either straddle or non-straddle design. Choose the straddle base for areas with permanent obstructions or non-straddle base for standard applications. When tilted, ladder rolls smoothly on 4" wheels. Uniform capacity is 350 pounds. Straddle base ladders include a removable tool tray that measures 24" x 10". Available with perforated steps or grip strut steps. Blue baked-in powder-coated toughness. Units are shipped knockdown, some assembly required.

**FDA Compliant Finish** - The square tubular steel Tip-N-Roll FDA Ladder has a special FDA-compliant powder coat white finish that provides a low-cost alternative to stainless steel construction. Rubber feet provided for floor protection. Stainless steel hardware included. When tilted, ladder rolls smoothly on wheels. This ladder has perforated grip steps. Some assembly required.



STRADDLE DESIGN



NON-STRADDLE

FDA COMPLIANT FINISH  
NON-STRADDLE

| NUMBER OF STEPS                                 | ANGLE | TOP STEP (W x D x H) | OVERALL SIZE (W x D x H)                        | WEIGHT (POUND) | MODEL NUMBER            | MODEL NUMBER            |
|---|-------|----------------------|---|----------------|-------------------------|-------------------------|
| <b>STRADDLE DESIGN</b>                          |       |                      |   |                | <b>GRIP STRUT STEPS</b> | <b>PERFORATED STEPS</b> |
| 2   | 50°   | 24" x 21" x 20"      | 29½" x 44 <sup>13</sup> / <sub>16</sub> " x 50" | 120            | LAD-TRS-50-2-G          | LAD-TRS-50-2-P          |
| 3   | 50°   | 24" x 21" x 30"      | 29½" x 52 <sup>9</sup> / <sub>16</sub> " x 60"  | 128            | LAD-TRS-50-3-G          | LAD-TRS-50-3-P          |
| 4   | 50°   | 24" x 21" x 40"      | 29½" x 60 <sup>15</sup> / <sub>16</sub> " x 70" | 144            | LAD-TRS-50-4-G          | LAD-TRS-50-4-P          |
| 5   | 50°   | 24" x 21" x 50"      | 29½" x 69 <sup>3</sup> / <sub>8</sub> " x 80"   | 204            | LAD-TRS-50-5-G          | LAD-TRS-50-5-P          |
| 6   | 50°   | 24" x 21" x 60"      | 29½" x 77 <sup>1</sup> / <sub>8</sub> " x 90"   | 268            | LAD-TRS-50-6-G          | LAD-TRS-50-6-P          |
| 2   | 58°   | 24" x 21" x 20"      | 29½" x 44 <sup>3</sup> / <sub>16</sub> " x 50"  | 120            | LAD-TRS-60-2-G          | LAD-TRS-60-2-P          |
| 3   | 58°   | 24" x 21" x 30"      | 29½" x 50 <sup>7</sup> / <sub>16</sub> " x 60"  | 126            | LAD-TRS-60-3-G          | LAD-TRS-60-3-P          |
| 4   | 58°   | 24" x 21" x 40"      | 29½" x 55 <sup>3</sup> / <sub>4</sub> " x 70"   | 174            | LAD-TRS-60-4-G          | LAD-TRS-60-4-P          |
| 5   | 58°   | 24" x 21" x 50"      | 29½" x 62" x 80"                                | 228            | LAD-TRS-60-5-G          | LAD-TRS-60-5-P          |
| 6   | 58°   | 24" x 21" x 60"      | 29½" x 68 <sup>1</sup> / <sub>4</sub> " x 90"   | 232            | LAD-TRS-60-6-G          | LAD-TRS-60-6-P          |
| <b>NON-STRADDLE DESIGN</b>                      |       |                      |   |                | <b>GRIP STRUT STEPS</b> | <b>PERFORATED STEPS</b> |
| 2   | 50°   | 24" x 14" x 20"      | 29½" x 30 <sup>15</sup> / <sub>16</sub> " x 50" | 108            | LAD-TRN-50-2-G          | LAD-TRN-50-2-P          |
| 3   | 50°   | 24" x 14" x 30"      | 29½" x 38 <sup>1</sup> / <sub>2</sub> " x 60"   | 117            | LAD-TRN-50-3-G          | LAD-TRN-50-3-P          |
| 4   | 50°   | 24" x 14" x 40"      | 29½" x 47" x 70"                                | 167            | LAD-TRN-50-4-G          | LAD-TRN-50-4-P          |
| 5   | 50°   | 24" x 14" x 50"      | 29½" x 55 <sup>1</sup> / <sub>2</sub> " x 80"   | 202            | LAD-TRN-50-5-G          | LAD-TRN-50-5-P          |
| 6   | 50°   | 24" x 14" x 60"      | 29½" x 63 <sup>3</sup> / <sub>8</sub> " x 90"   | 215            | LAD-TRN-50-6-G          | LAD-TRN-50-6-P          |
| 2   | 58°   | 24" x 14" x 20"      | 29½" x 30 <sup>1</sup> / <sub>8</sub> " x 50"   | 111            | LAD-TRN-60-2-G          | LAD-TRN-60-2-P          |
| 3   | 58°   | 24" x 14" x 30"      | 29½" x 35 <sup>13</sup> / <sub>16</sub> " x 60" | 121            | LAD-TRN-60-3-G          | LAD-TRN-60-3-P          |
| 4   | 58°   | 24" x 14" x 40"      | 29½" x 42 <sup>1</sup> / <sub>16</sub> " x 70"  | 144            | LAD-TRN-60-4-G          | LAD-TRN-60-4-P          |
| 5   | 58°   | 24" x 14" x 50"      | 29½" x 48 <sup>3</sup> / <sub>16</sub> " x 80"  | 182            | LAD-TRN-60-5-G          | LAD-TRN-60-5-P          |
| 6   | 58°   | 24" x 14" x 60"      | 29½" x 54 <sup>5</sup> / <sub>16</sub> " x 90"  | 188            | LAD-TRN-60-6-G          | LAD-TRN-60-6-P          |
| <b>FDA COMPLIANT FINISH NON-STRADDLE DESIGN</b> |       |                      |   |                |                         | <b>PERFORATED STEPS</b> |
| 2   | 58°   | 24" x 14" x 20"      | 29½" x 33 <sup>11</sup> / <sub>16</sub> " x 50" | 111            | ---                     | LAD-TRN-60-2-FDA        |
| 3   | 58°   | 24" x 14" x 30"      | 29½" x 34 <sup>1</sup> / <sub>16</sub> " x 60"  | 121            | ---                     | LAD-TRN-60-3-FDA        |
| 4   | 58°   | 24" x 14" x 40"      | 29½" x 40 <sup>3</sup> / <sub>8</sub> " x 70"   | 144            | ---                     | LAD-TRN-60-4-FDA        |
| 5   | 58°   | 24" x 14" x 50"      | 29½" x 46 <sup>5</sup> / <sub>8</sub> " x 80"   | 182            | ---                     | LAD-TRN-60-5-FDA        |



model LAD-RAF-6-P



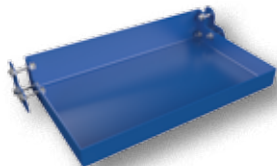
### Roll-A-Fold Ladders



Portable ladders conveniently fold for storage. Constructed of square tubing framework which handles uniform capacities up to 350 lb. Features 30" high removable hand railing, with 12 step models featuring a 36" removable hand railing, 14" deep top platform, and a baked-in powder-coated toughness (11 and 12 step units are painted). Also features a 58° climb angle with the EZ models featuring a 50° climb angle. Each step measures 16<sup>13</sup>/<sub>16</sub>" wide by 7" deep and is spaced 10" apart. Models with 8 - 12 steps have steps that measure 23<sup>3</sup>/<sub>16</sub>" wide. Unit rolls around on two large 10" x 2<sup>1</sup>/<sub>2</sub>" hard rubber wheels. Units are shipped crated, some assembly required. Complies with ANSI A14.7 and OSHA 1910.29 specifications.

| NO. OF STEPS | TOP STEP HEIGHT | OVERALL (W x D x H)  | WEIGHT (POUND) | MODEL NUMBER       |                    |
|--------------|-----------------|--|----------------|--------------------|--------------------|
|              |                 |  |                | GRIP STRUT STEPS   | PERFORATED STEPS   |
| 4            | 40"             | 28" x 41 <sup>1</sup> / <sub>2</sub> " x 70"                                 | 112            | LAD-RAF-4-G        | LAD-RAF-4-P        |
| 5            | 50"             | 28" x 47 <sup>5</sup> / <sub>8</sub> " x 80"                                 | 166            | LAD-RAF-5-G        | LAD-RAF-5-P        |
| 6            | 60"             | 28" x 53 <sup>3</sup> / <sub>4</sub> " x 90"                                 | 182            | LAD-RAF-6-G        | LAD-RAF-6-P        |
| 7            | 70"             | 28" x 60 <sup>5</sup> / <sub>8</sub> " x 100"                                | 218            | LAD-RAF-7-G        | LAD-RAF-7-P        |
| 8            | 80"             | 34 <sup>1</sup> / <sub>4</sub> " x 66 <sup>3</sup> / <sub>8</sub> " x 110"   | 258            | LAD-RAF-8-24-G     | LAD-RAF-8-24-P     |
| 9            | 90"             | 34 <sup>1</sup> / <sub>4</sub> " x 72 <sup>9</sup> / <sub>16</sub> " x 120"  | 284            | LAD-RAF-9-24-G     | LAD-RAF-9-24-P     |
| 10           | 100"            | 34 <sup>1</sup> / <sub>4</sub> " x 78 <sup>7</sup> / <sub>8</sub> " x 130"   | 375            | LAD-RAF-10-24-G    | LAD-RAF-10-24-P    |
| 11           | 110"            | 34 <sup>1</sup> / <sub>4</sub> " x 85 <sup>1</sup> / <sub>8</sub> " x 140"   | 376            | LAD-RAF-11-24-G    | LAD-RAF-11-24-P    |
| 12           | 120"            | 34 <sup>1</sup> / <sub>4</sub> " x 91" x 156"                                | 378            | LAD-RAF-12-24-G    | LAD-RAF-12-24-P    |
| 4            | 40"             | 28" x 45 <sup>13</sup> / <sub>16</sub> " x 70"                               | 114            | LAD-RAF-4-G-EZ     | LAD-RAF-4-P-EZ     |
| 5            | 50"             | 28" x 54 <sup>5</sup> / <sub>16</sub> " x 80"                                | 168            | LAD-RAF-5-G-EZ     | LAD-RAF-5-P-EZ     |
| 6            | 60"             | 28" x 64 <sup>5</sup> / <sub>8</sub> " x 90"                                 | 208            | LAD-RAF-6-G-EZ     | LAD-RAF-6-P-EZ     |
| 7            | 70"             | 28" x 70 <sup>13</sup> / <sub>16</sub> " x 100"                              | 220            | LAD-RAF-7-G-EZ     | LAD-RAF-7-P-EZ     |
| 8            | 80"             | 34 <sup>1</sup> / <sub>4</sub> " x 77" x 110"                                | 256            | LAD-RAF-8-24-G-EZ  | LAD-RAF-8-24-P-EZ  |
| 9            | 90"             | 34 <sup>1</sup> / <sub>4</sub> " x 89 <sup>5</sup> / <sub>8</sub> " x 120"   | 312            | LAD-RAF-9-24-G-EZ  | LAD-RAF-9-24-P-EZ  |
| 10           | 100"            | 34 <sup>1</sup> / <sub>4</sub> " x 95 <sup>13</sup> / <sub>16</sub> " x 130" | 322            | LAD-RAF-10-24-G-EZ | LAD-RAF-10-24-P-EZ |
| 11           | 110"            | 34 <sup>1</sup> / <sub>4</sub> " x 102 <sup>3</sup> / <sub>4</sub> " x 140"  | 364            | LAD-RAF-11-24-G-EZ | LAD-RAF-11-24-P-EZ |
| 12           | 120"            | 34 <sup>1</sup> / <sub>4</sub> " x 113 <sup>5</sup> / <sub>16</sub> " x 156" | 384            | LAD-RAF-12-24-G-EZ | LAD-RAF-12-24-P-EZ |

### Ladder Tool Trays



model LAD-TT-A

Ladder Tool Trays are universal trays that fit different style ladders. This easy bolt-on option measures 10<sup>5</sup>/<sub>16</sub>" in length with a height of 3<sup>3</sup>/<sub>8</sub>". Width of tool tray options for each ladder are available. Baked-in powder-coated toughness.

| MODEL NUMBER | FINISH    | OVERALL SIZE (W x L x H)  | LADDER MODEL COMPATIBILITY                              | WEIGHT (POUND) |
|--------------|-----------|---|---|----------------|
| LAD-TT-A     | BLUE      | 19 <sup>5</sup> / <sub>8</sub> " x 10 <sup>5</sup> / <sub>16</sub> " x 3 <sup>1</sup> / <sub>8</sub> "  | LAD-RAF**, LAD-RAF-EZ**, LAD-PW-18                      | 11             |
| LAD-TT-B     | BLUE      | 26 <sup>3</sup> / <sub>8</sub> " x 10 <sup>5</sup> / <sub>16</sub> " x 3 <sup>1</sup> / <sub>8</sub> "  | LAD-MM, LAD-TRN, LAD-PW-26, LAD-RAF*, LAD-RAF-EZ* & LAD | 14             |
| LAD-TT-C     | BLUE      | 33 <sup>1</sup> / <sub>16</sub> " x 10 <sup>5</sup> / <sub>16</sub> " x 3 <sup>1</sup> / <sub>8</sub> " | LAD-PW-32   | 17             |
| LAD-TT-D     | FDA WHITE | 26 <sup>3</sup> / <sub>8</sub> " x 10 <sup>5</sup> / <sub>16</sub> " x 3 <sup>1</sup> / <sub>8</sub> "  | LAD-TRN-FDA   | 14             |
| LAD-TT-E     | ESD BLACK | 26 <sup>3</sup> / <sub>8</sub> " x 10 <sup>5</sup> / <sub>16</sub> " x 3 <sup>1</sup> / <sub>8</sub> "  | LAD-PW-26-X-G-ESD                                       | 14             |

\* ONLY WORKS WITH STEPS 8 TO 12  
 \*\* ONLY WORKS WITH STEPS 4 TO 7



### Commercial Spring Loaded Ladders

Commercial users of rolling ladders now have an attractive and economical alternative to the traditional warehouse rolling ladders. This sleek design also provides maximum safety and convenience. The all directional spring-loaded swivel casters feature steel dome protection and include rubber pad bottoms to minimize movement. Climb angle is 58°. The top step is 16" wide by 11" deep, while the remaining steps measure 16" wide by 8" deep. The baked-in powder-coated toughness provides a durable attractive appearance. Uniform capacity is 300 pounds.



Spring-loaded swivel casters are protected by a steel dome with rubber bottom pads for extra grip.

| NUMBER OF STEPS | STEP TYPE  | TOP STEP HEIGHT                    | OVERALL (W x D x H)  | WEIGHT (POUND) | MODEL NUMBER |           |           |
|-----------------|------------|------------------------------------|--|----------------|--------------|-----------|-----------|
|                 |            |                                    |  |                | YELLOW       | BLUE      | WHITE     |
| 1               | RUBBER     | 9 <sup>1</sup> / <sub>2</sub> "    | 21 <sup>1</sup> / <sub>8</sub> " x 16 <sup>1</sup> / <sub>8</sub> " x 9 <sup>1</sup> / <sub>2</sub> "      | 21             | LAD-1-Y      | LAD-1-B   | LAD-1-W   |
| 2               | RUBBER     | 18 <sup>1</sup> / <sub>2</sub> "   | 21 <sup>1</sup> / <sub>8</sub> " x 20 <sup>1</sup> / <sub>4</sub> " x 18 <sup>1</sup> / <sub>2</sub> "     | 26             | LAD-2-Y      | LAD-2-B   | LAD-2-W   |
| 3               | RUBBER     | 28 <sup>11</sup> / <sub>16</sub> " | 21 <sup>1</sup> / <sub>8</sub> " x 25 <sup>9</sup> / <sub>16</sub> " x 63 <sup>7</sup> / <sub>16</sub> "   | 90             | LAD-3-Y      | LAD-3-B   | LAD-3-W   |
| 4               | RUBBER     | 38 <sup>3</sup> / <sub>16</sub> "  | 21 <sup>1</sup> / <sub>8</sub> " x 31 <sup>13</sup> / <sub>16</sub> " x 72 <sup>15</sup> / <sub>16</sub> " | 94             | LAD-4-Y      | LAD-4-B   | LAD-4-W   |
| 5               | RUBBER     | 47 <sup>11</sup> / <sub>16</sub> " | 21 <sup>1</sup> / <sub>8</sub> " x 38 <sup>1</sup> / <sub>16</sub> " x 82 <sup>7</sup> / <sub>16</sub> "   | 96             | LAD-5-Y      | LAD-5-B   | LAD-5-W   |
| 1               | PERFORATED | 9 <sup>1</sup> / <sub>2</sub> "    | 21 <sup>1</sup> / <sub>8</sub> " x 16 <sup>1</sup> / <sub>8</sub> " x 9 <sup>1</sup> / <sub>2</sub> "      | 21             | LAD-1-Y-P    | LAD-1-B-P | LAD-1-W-P |
| 2               | PERFORATED | 18 <sup>1</sup> / <sub>2</sub> "   | 21 <sup>1</sup> / <sub>8</sub> " x 20 <sup>1</sup> / <sub>4</sub> " x 18 <sup>1</sup> / <sub>2</sub> "     | 26             | LAD-2-Y-P    | LAD-2-B-P | LAD-2-W-P |
| 3               | PERFORATED | 28 <sup>11</sup> / <sub>16</sub> " | 21 <sup>1</sup> / <sub>8</sub> " x 25 <sup>9</sup> / <sub>16</sub> " x 63 <sup>7</sup> / <sub>16</sub> "   | 90             | LAD-3-Y-P    | LAD-3-B-P | LAD-3-W-P |
| 4               | PERFORATED | 38 <sup>3</sup> / <sub>16</sub> "  | 21 <sup>1</sup> / <sub>8</sub> " x 31 <sup>13</sup> / <sub>16</sub> " x 72 <sup>15</sup> / <sub>16</sub> " | 94             | LAD-4-Y-P    | LAD-4-B-P | LAD-4-W-P |
| 5               | PERFORATED | 47 <sup>11</sup> / <sub>16</sub> " | 21 <sup>1</sup> / <sub>8</sub> " x 38 <sup>1</sup> / <sub>16</sub> " x 82 <sup>7</sup> / <sub>16</sub> "   | 96             | LAD-5-Y-P    | LAD-5-B-P | LAD-5-W-P |

## Maintenance Ladders

Portable ladders for use around warehouses, hardware stores, or inventory rooms. Tilt the unit to allow for portability. Units roll on 4" poly-on-poly wheels. Constructed of square tubing framework, which handles uniform capacities up to 350 pounds. Features 30" high removable hand railing (36" on 12 step models), access chain, 21" deep top platform, and baked-in powder-coated toughness. Each step measures 24" wide by 7" deep and is spaced 10" apart. Models with 5 - 12 steps are shipped crated, some assembly required. Complies with ANSI A14.7 and OSHA 1910.29 specifications.

48 Hours  
to Ship

POWDER  
COATED  
TOUGH



model LAD-MM-6-G

| NO. OF STEPS | TOP STEP HEIGHT | OVERALL (W x D x H) | WEIGHT (POUND) | MODEL NUMBER GRIP STRUT | MODEL NUMBER PERFORATED |
|--------------|-----------------|---------------------|----------------|-------------------------|-------------------------|
| 2            | 20"             | 29½" x 38½" x 50"   | 110            | LAD-MM-2-G              | LAD-MM-2-P              |
| 3            | 30"             | 29½" x 38½" x 60"   | 118            | LAD-MM-3-G              | LAD-MM-3-P              |
| 4            | 40"             | 29½" x 43⅝" x 70"   | 125            | LAD-MM-4-G              | LAD-MM-4-P              |
| 5            | 50"             | 29½" x 49¾" x 80"   | 180            | LAD-MM-5-G              | LAD-MM-5-P              |
| 6            | 60"             | 29½" x 56⅞" x 90"   | 210            | LAD-MM-6-G              | LAD-MM-6-P              |
| 7            | 70"             | 29½" x 62⅞" x 100"  | 243            | LAD-MM-7-G              | LAD-MM-7-P              |
| 8            | 80"             | 29½" x 68⅝" x 110"  | 260            | LAD-MM-8-G              | LAD-MM-8-P              |
| 9            | 90"             | 29½" x 74⅞" x 120"  | 279            | LAD-MM-9-G              | LAD-MM-9-P              |
| 10           | 100"            | 32" x 81⅞" x 130"   | 310            | LAD-MM-10-G             | LAD-MM-10-P             |
| 11           | 110"            | 32" x 87⅞" x 140"   | 334            | LAD-MM-11-G             | LAD-MM-11-P             |
| 12           | 120"            | 32" x 93¼" x 156"   | 366            | LAD-MM-12-G             | LAD-MM-12-P             |

## Modular Style Stairways

Attractive Modular Style Stairways are economical and easily assembled. Steps are 36" wide with non-skid grip strut, which bolt in place and are baked-in powder-coated toughness. Standard climb angle is 31°. Customer must provide their landing height at time of purchase. Handrails and side rails bolt together. The handrail tubing has a powder-coat yellow finish. Units meet OSHA requirements and unit ships disassembled. Concrete Anchoring Hardware available.

| MODEL NUMBER | NUMBER OF STEPS | TOP STEP HEIGHT | UNIFORM CAPACITY | WEIGHT (POUND) |
|--------------|-----------------|-----------------|------------------|----------------|
| STAIR-36     | 5               | 36"             | 1,000 lb.        | 399            |
| STAIR-48     | 6               | 48"             | 1,000 lb.        | 519            |
| STAIR-60     | 8               | 60"             | 1,000 lb.        | 528            |
| STAIR-72     | 10              | 72"             | 1,000 lb.        | 592            |
| STAIR-84     | 12              | 84"             | 1,000 lb.        | 734            |
| STAIR-96     | 13              | 96"             | 1,000 lb.        | 898            |
| STAIR-108    | 15              | 108"            | 1,000 lb.        | 954            |
| STAIR-120    | 16              | 120"            | 1,000 lb.        | 1004           |
| STAIR-132    | 18              | 132"            | 1,000 lb.        | 1145           |
| STAIR-144    | 20              | 144"            | 1,000 lb.        | 1190           |



POWDER  
COATED  
TOUGH

## Modular Steel Work Platform Systems

Modular Work Platform Systems can be configured to fit any application. Platform legs have a fixed height and provide stability to the entire modular unit. Designed for maximum loading capacity of 500 pounds. Stair / platform configuration has a maximum capacity of 1,000 pounds. Fixed height ladder sections attach to platform. Individual grip steps are 23⅞" wide by 7" deep with 10" step spacing. Each ladder section includes round tube handrails. Each handrail section has a midrail and 4" toeboard. Constructed of industrial grade welded steel with a powder-coat finish. Meets OSHA specification 1910.23. Hardware is included for easy assembly. Concrete wedge anchors available for securing unit to floor. All components are sold separately. Survey sheet available on page 248.

| MODEL NUMBER | DESCRIPTION                                    | PLATFORM HEIGHT | WEIGHT (POUND) |
|--------------|--|-----------------|----------------|
| MP-S-2       | Stair Step Section with Handrails, 2 steps     | 30"             | 102            |
| MP-S-3       | Stair Step Section with Handrails, 3 steps     | 40"             | 117            |
| MP-S-4       | Stair Step Section with Handrails, 4 steps     | 50"             | 154            |
| MP-S-5       | Stair Step Section with Handrails, 5 steps     | 60"             | 187            |
| MP-S-6       | Stair Step Section with Handrails, 6 steps     | 70"             | 211            |
| MP-P         | Fixed-Height Platform 36" x 36" - no handrail  | 10"             | 66             |
| MP-L-2       | Fixed-Height Platform Support Legs - one pair  | 30"             | 33             |
| MP-L-3       | Fixed-Height Platform Support Legs - one pair  | 40"             | 49             |
| MP-L-4       | Fixed-Height Platform Support Legs - one pair  | 50"             | 65             |
| MP-L-5       | Fixed-Height Platform Support Legs - one pair  | 60"             | 81             |
| MP-L-6       | Fixed-Height Platform Support Legs - one pair  | 70"             | 99             |
| MP-HR        | Handrail with Toeboard, 36"L x 42"H, sold each |                 | 75             |
| AS-383       | 3/8" x 3"L Concrete Wedge Anchor, sold each    |                 | 1              |
| AS-383-4PK   | 3/8" x 3"L Concrete Wedge Anchor, 4 pack       |                 | 4              |



model MP-L-4



model MP-HR

POWDER  
COATED  
TOUGH



model MP-P



series LAD-FM



## Mezzanine Ladders (face mounted/retractable)

The Mezzanine Ladders are used for infrequent usage to access mezzanines. They are ratcheted into climbing angle and back into stored position. The wheels roll on the ground when ratcheted and the handrails mechanically rise into climb position when ladder locks into position. Quickly extend and retract the ladder. The mezzanine ladder allows for quick installation with mounting bracket provided for bolt-on installation or welded installation. Steps are 24¼" wide. Collapsed distance from wall is approximately 15½" for all models. Customer must provide their mezzanine height at time of purchase. Baked-in powder-coated toughness. Meets or exceeds all OSHA requirements. Ships knockdown, some assembly required. Survey sheet available on page 247 for mezzanine heights of 60" to 120".

| MODEL NUMBER | MEZZANINE HEIGHT | UNIFORM CAPACITY | INCLINE ANGLE | WEIGHT (POUND) |
|--------------|------------------|------------------|---------------|----------------|
| LAD-FM-60    | 60"              | 350 lb.          | 58°           | 257            |
| LAD-FM-72    | 72"              | 350 lb.          | 58°           | 282            |
| LAD-FM-84    | 84"              | 350 lb.          | 58°           | 316            |
| LAD-FM-96    | 96"              | 350 lb.          | 58°           | 332            |
| LAD-FM-108   | 108"             | 350 lb.          | 58°           | 354            |
| LAD-FM-120   | 120"             | 350 lb.          | 58°           | 386            |

## Alternating-Tread Stairs

Alternating-Tread Step design offers a shorter span than traditional steps. Features handrail on each side of unit, dual safety chain at the top of the stair, and formed steel steps with raised surfaces for better traction. Welded steel construction with bolt-on handrails. Baked-in powder-coated toughness. Meets OSHA specification 29 CFR 1910.25 (e). Ships knockdown for lower freight costs.

48 Hours  
to Ship

model ATS-8-56



| MODEL NUMBER | NUMBER OF STEPS | TOP STEP HEIGHT                   | OVERALL LENGTH                    | STEP ANGLE | UNIFORM CAPACITY | WEIGHT (POUND) |
|--------------|-----------------|-----------------------------------|-----------------------------------|------------|------------------|----------------|
| ATS-4-56     | 7               | 48 <sup>1</sup> / <sub>8</sub> "  | 41 <sup>5</sup> / <sub>8</sub> "  | 56°        | 350 lb.          | 188            |
| ATS-5-56     | 8               | 60 <sup>1</sup> / <sub>8</sub> "  | 49 <sup>1</sup> / <sub>4</sub> "  | 56°        | 350 lb.          | 192            |
| ATS-6-56     | 10              | 72 <sup>1</sup> / <sub>8</sub> "  | 57 <sup>1</sup> / <sub>2</sub> "  | 56°        | 350 lb.          | 214            |
| ATS-7-56     | 12              | 84 <sup>1</sup> / <sub>8</sub> "  | 65 <sup>3</sup> / <sub>4</sub> "  | 56°        | 350 lb.          | 224            |
| ATS-8-56     | 13              | 96 <sup>1</sup> / <sub>8</sub> "  | 73 <sup>1</sup> / <sub>2</sub> "  | 56°        | 350 lb.          | 251            |
| ATS-9-56     | 15              | 108 <sup>3</sup> / <sub>8</sub> " | 81 <sup>5</sup> / <sub>8</sub> "  | 56°        | 350 lb.          | 284            |
| ATS-10-56    | 16              | 120 <sup>1</sup> / <sub>8</sub> " | 89 <sup>3</sup> / <sub>4</sub> "  | 56°        | 350 lb.          | 312            |
| ATS-11-56    | 17              | 131 <sup>7</sup> / <sub>8</sub> " | 97 <sup>1</sup> / <sub>2</sub> "  | 56°        | 350 lb.          | 374            |
| ATS-12-56    | 20              | 143 <sup>7</sup> / <sub>8</sub> " | 106"                              | 56°        | 350 lb.          | 400            |
| ATS-13-56    | 21              | 156 <sup>3</sup> / <sub>8</sub> " | 114 <sup>1</sup> / <sub>8</sub> " | 56°        | 350 lb.          | 438            |
| ATS-14-56    | 24              | 168 <sup>1</sup> / <sub>8</sub> " | 122 <sup>3</sup> / <sub>8</sub> " | 56°        | 350 lb.          | 470            |
| ATS-4-68     | 7               | 48 <sup>1</sup> / <sub>8</sub> "  | 30"                               | 68°        | 350 lb.          | 164            |
| ATS-5-68     | 8               | 60 <sup>1</sup> / <sub>8</sub> "  | 34 <sup>5</sup> / <sub>8</sub> "  | 68°        | 350 lb.          | 180            |
| ATS-6-68     | 10              | 72 <sup>1</sup> / <sub>8</sub> "  | 39 <sup>1</sup> / <sub>2</sub> "  | 68°        | 350 lb.          | 212            |
| ATS-7-68     | 12              | 84 <sup>1</sup> / <sub>8</sub> "  | 44 <sup>1</sup> / <sub>2</sub> "  | 68°        | 350 lb.          | 238            |
| ATS-8-68     | 13              | 96 <sup>1</sup> / <sub>8</sub> "  | 49 <sup>1</sup> / <sub>8</sub> "  | 68°        | 350 lb.          | 248            |
| ATS-9-68     | 15              | 108 <sup>1</sup> / <sub>8</sub> " | 54 <sup>1</sup> / <sub>8</sub> "  | 68°        | 350 lb.          | 256            |
| ATS-10-68    | 16              | 120 <sup>1</sup> / <sub>8</sub> " | 58 <sup>7</sup> / <sub>8</sub> "  | 68°        | 350 lb.          | 274            |
| ATS-11-68    | 17              | 131 <sup>7</sup> / <sub>8</sub> " | 63 <sup>1</sup> / <sub>2</sub> "  | 68°        | 350 lb.          | 298            |
| ATS-12-68    | 20              | 143 <sup>7</sup> / <sub>8</sub> " | 68 <sup>1</sup> / <sub>2</sub> "  | 68°        | 350 lb.          | 338            |
| ATS-13-68    | 21              | 156 <sup>3</sup> / <sub>8</sub> " | 73 <sup>1</sup> / <sub>2</sub> "  | 68°        | 350 lb.          | 406            |
| ATS-14-68    | 24              | 168 <sup>1</sup> / <sub>8</sub> " | 78 <sup>3</sup> / <sub>8</sub> "  | 68°        | 350 lb.          | 456            |



## Cross-Over Ladders

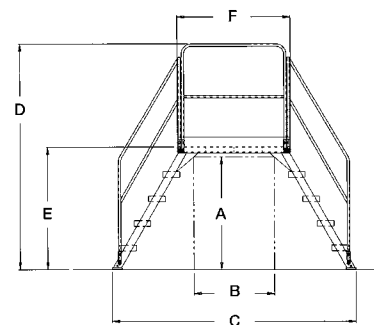
Mount where you need permanent access at crossover points. The upper platform features removable two sided 42<sup>5</sup>/<sub>8</sub>" high handrail with 21" mid-rail and fixed 4" toeboards to prevent objects from rolling off. Serrated steps for extra grip and safety are 23<sup>1</sup>/<sub>2</sub>" wide and 7" deep with a step spacing of 10". The angle of the steps are 58°. The overall ladder width is 29<sup>1</sup>/<sub>4</sub>". Ground legs include floor mounting pads. Units must be anchored to the floor. Units are all steel construction and can be knock-down for storage and shipping. Uniform capacity is 500 pounds. Meets ANSI A14.7 and OSHA 29 CFR 1910.24. Baked-in powder-coated toughness.



model COL-4-36-44



| MODEL NUMBER | NUMBER OF STEPS | A                                | B                                | C                                 | D                                 | E   | F   | WEIGHT (POUND) |
|--------------|-----------------|----------------------------------|----------------------------------|-----------------------------------|-----------------------------------|-----|-----|----------------|
| COL-3-26-14  | 3               | 28 <sup>1</sup> / <sub>4</sub> " | 14 <sup>1</sup> / <sub>8</sub> " | 54 <sup>1</sup> / <sub>2</sub> "  | 72 <sup>7</sup> / <sub>8</sub> "  | 30" | 24" | 264            |
| COL-3-26-23  | 3               | 28 <sup>1</sup> / <sub>4</sub> " | 26 <sup>1</sup> / <sub>8</sub> " | 66 <sup>1</sup> / <sub>2</sub> "  | 72 <sup>7</sup> / <sub>8</sub> "  | 30" | 36" | 282            |
| COL-3-26-33  | 3               | 28 <sup>1</sup> / <sub>4</sub> " | 38 <sup>1</sup> / <sub>8</sub> " | 78 <sup>1</sup> / <sub>2</sub> "  | 72 <sup>7</sup> / <sub>8</sub> "  | 30" | 48" | 315            |
| COL-3-26-44  | 3               | 28 <sup>1</sup> / <sub>4</sub> " | 50 <sup>1</sup> / <sub>8</sub> " | 90 <sup>1</sup> / <sub>2</sub> "  | 73"                               | 30" | 60" | 349            |
| COL-4-36-14  | 4               | 38 <sup>1</sup> / <sub>4</sub> " | 14 <sup>1</sup> / <sub>8</sub> " | 67"                               | 82 <sup>7</sup> / <sub>8</sub> "  | 40" | 24" | 326            |
| COL-4-36-23  | 4               | 38 <sup>1</sup> / <sub>4</sub> " | 26 <sup>1</sup> / <sub>8</sub> " | 79"                               | 82 <sup>7</sup> / <sub>8</sub> "  | 40" | 36" | 348            |
| COL-4-36-33  | 4               | 38 <sup>1</sup> / <sub>4</sub> " | 38 <sup>1</sup> / <sub>8</sub> " | 91"                               | 82 <sup>7</sup> / <sub>8</sub> "  | 40" | 48" | 380            |
| COL-4-36-44  | 4               | 38 <sup>1</sup> / <sub>4</sub> " | 50 <sup>1</sup> / <sub>8</sub> " | 103"                              | 83"                               | 40" | 60" | 385            |
| COL-5-46-14  | 5               | 48 <sup>1</sup> / <sub>4</sub> " | 14 <sup>1</sup> / <sub>8</sub> " | 79 <sup>1</sup> / <sub>2</sub> "  | 92 <sup>7</sup> / <sub>8</sub> "  | 50" | 24" | 340            |
| COL-5-46-23  | 5               | 48 <sup>1</sup> / <sub>4</sub> " | 26 <sup>1</sup> / <sub>8</sub> " | 91 <sup>1</sup> / <sub>2</sub> "  | 92 <sup>7</sup> / <sub>8</sub> "  | 50" | 36" | 380            |
| COL-5-46-33  | 5               | 48 <sup>1</sup> / <sub>4</sub> " | 38 <sup>1</sup> / <sub>8</sub> " | 103 <sup>1</sup> / <sub>2</sub> " | 92 <sup>7</sup> / <sub>8</sub> "  | 50" | 48" | 420            |
| COL-5-46-44  | 5               | 48 <sup>1</sup> / <sub>4</sub> " | 50 <sup>1</sup> / <sub>8</sub> " | 115 <sup>1</sup> / <sub>2</sub> " | 93"                               | 50" | 60" | 440            |
| COL-6-56-14  | 6               | 58 <sup>1</sup> / <sub>4</sub> " | 14 <sup>1</sup> / <sub>8</sub> " | 92"                               | 102 <sup>7</sup> / <sub>8</sub> " | 60" | 24" | 348            |
| COL-6-56-23  | 6               | 58 <sup>1</sup> / <sub>4</sub> " | 26 <sup>1</sup> / <sub>8</sub> " | 104"                              | 102 <sup>7</sup> / <sub>8</sub> " | 60" | 36" | 398            |
| COL-6-56-33  | 6               | 58 <sup>1</sup> / <sub>4</sub> " | 38 <sup>1</sup> / <sub>8</sub> " | 116"                              | 102 <sup>7</sup> / <sub>8</sub> " | 60" | 48" | 401            |
| COL-6-56-44  | 6               | 58 <sup>1</sup> / <sub>4</sub> " | 50 <sup>1</sup> / <sub>8</sub> " | 128"                              | 103"                              | 60" | 60" | 460            |

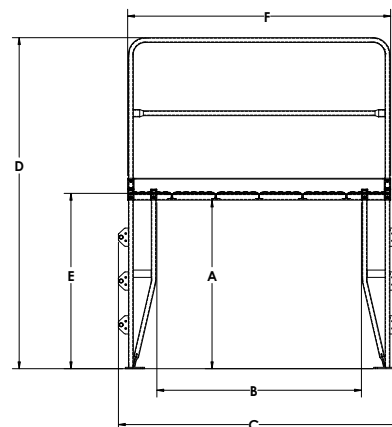


## Cross-Over Vertical Ladders

Mount where you need permanent access at crossover points. The upper platform features removable two sided 42<sup>5</sup>/<sub>8</sub>" high handrail with 21" mid-rail and fixed 4" toeboards to prevent objects from rolling off. Serrated platform for extra grip is 20-9/16" wide. Top half of steps covered in grip material for safety are 23-9/16" wide with step spacing of 12". Ground legs include floor mounting pads. Units must be anchored to the floor. Units are all steel construction and can be knock-down for storage and shipping. Uniform capacity is 500 pounds. Meets OSHA 29 CFR 1910.27. Baked-in powder-coated toughness.



| MODEL NUMBER | NUMBER OF STEPS | A                                 | B   | C   | D                                 | E   | F   | WEIGHT (POUND) |
|--------------|-----------------|-----------------------------------|-----|-----|-----------------------------------|-----|-----|----------------|
| COLV-3-34-8  | 3               | 34 <sup>3</sup> / <sub>16</sub> " | 8"  | 29" | 78 <sup>5</sup> / <sub>8</sub> "  | 36" | 24" | 198            |
| COLV-3-34-20 | 3               | 34 <sup>3</sup> / <sub>16</sub> " | 20" | 41" | 78 <sup>5</sup> / <sub>8</sub> "  | 36" | 36" | 232            |
| COLV-3-34-32 | 3               | 34 <sup>3</sup> / <sub>16</sub> " | 32" | 53" | 78 <sup>5</sup> / <sub>8</sub> "  | 36" | 48" | 267            |
| COLV-3-34-44 | 3               | 34 <sup>3</sup> / <sub>16</sub> " | 44" | 65" | 78 <sup>5</sup> / <sub>8</sub> "  | 36" | 60" | 301            |
| COLV-3-34-56 | 3               | 34 <sup>3</sup> / <sub>16</sub> " | 56" | 77" | 78 <sup>5</sup> / <sub>8</sub> "  | 36" | 72" | 336            |
| COLV-4-46-8  | 4               | 46 <sup>3</sup> / <sub>16</sub> " | 8"  | 29" | 90 <sup>5</sup> / <sub>8</sub> "  | 48" | 24" | 183            |
| COLV-4-46-20 | 4               | 46 <sup>3</sup> / <sub>16</sub> " | 20" | 41" | 90 <sup>5</sup> / <sub>8</sub> "  | 48" | 36" | 217            |
| COLV-4-46-32 | 4               | 46 <sup>3</sup> / <sub>16</sub> " | 32" | 53" | 90 <sup>5</sup> / <sub>8</sub> "  | 48" | 48" | 252            |
| COLV-4-46-44 | 4               | 46 <sup>3</sup> / <sub>16</sub> " | 44" | 65" | 90 <sup>5</sup> / <sub>8</sub> "  | 48" | 60" | 286            |
| COLV-4-46-56 | 4               | 46 <sup>3</sup> / <sub>16</sub> " | 56" | 77" | 90 <sup>5</sup> / <sub>8</sub> "  | 48" | 72" | 321            |
| COLV-5-58-8  | 5               | 58 <sup>3</sup> / <sub>16</sub> " | 8"  | 29" | 102 <sup>5</sup> / <sub>8</sub> " | 60" | 24" | 202            |
| COLV-5-58-20 | 5               | 58 <sup>3</sup> / <sub>16</sub> " | 20" | 41" | 102 <sup>5</sup> / <sub>8</sub> " | 60" | 36" | 237            |
| COLV-5-58-32 | 5               | 58 <sup>3</sup> / <sub>16</sub> " | 32" | 53" | 102 <sup>5</sup> / <sub>8</sub> " | 60" | 48" | 271            |
| COLV-5-58-44 | 5               | 58 <sup>3</sup> / <sub>16</sub> " | 44" | 65" | 102 <sup>5</sup> / <sub>8</sub> " | 60" | 60" | 306            |
| COLV-5-58-56 | 5               | 58 <sup>3</sup> / <sub>16</sub> " | 56" | 77" | 102 <sup>5</sup> / <sub>8</sub> " | 60" | 72" | 340            |
| COLV-6-70-8  | 6               | 70 <sup>3</sup> / <sub>16</sub> " | 8"  | 29" | 114 <sup>5</sup> / <sub>8</sub> " | 72" | 24" | 222            |
| COLV-6-70-20 | 6               | 70 <sup>3</sup> / <sub>16</sub> " | 20" | 41" | 114 <sup>5</sup> / <sub>8</sub> " | 72" | 36" | 256            |
| COLV-6-70-32 | 6               | 70 <sup>3</sup> / <sub>16</sub> " | 32" | 53" | 114 <sup>5</sup> / <sub>8</sub> " | 72" | 48" | 291            |
| COLV-6-70-44 | 6               | 70 <sup>3</sup> / <sub>16</sub> " | 44" | 65" | 114 <sup>5</sup> / <sub>8</sub> " | 72" | 60" | 323            |
| COLV-6-70-56 | 6               | 70 <sup>3</sup> / <sub>16</sub> " | 56" | 77" | 114 <sup>5</sup> / <sub>8</sub> " | 72" | 72" | 360            |
| COLV-7-82-8  | 7               | 82 <sup>3</sup> / <sub>16</sub> " | 8"  | 29" | 126 <sup>5</sup> / <sub>8</sub> " | 84" | 24" | 244            |
| COLV-7-82-20 | 7               | 82 <sup>3</sup> / <sub>16</sub> " | 20" | 41" | 126 <sup>5</sup> / <sub>8</sub> " | 84" | 36" | 279            |
| COLV-7-82-32 | 7               | 82 <sup>3</sup> / <sub>16</sub> " | 32" | 53" | 126 <sup>5</sup> / <sub>8</sub> " | 84" | 48" | 313            |
| COLV-7-82-44 | 7               | 82 <sup>3</sup> / <sub>16</sub> " | 44" | 65" | 126 <sup>5</sup> / <sub>8</sub> " | 84" | 60" | 348            |
| COLV-7-82-56 | 7               | 82 <sup>3</sup> / <sub>16</sub> " | 56" | 77" | 126 <sup>5</sup> / <sub>8</sub> " | 84" | 72" | 382            |





USE LESS FLOOR SPACE



## Alternating Step Cross-Over Ladders

Mount where you need permanent access at crossover points. Alternating step design for shorter overall span than other units. The upper platform features removable two sided 39" high handrail with 21" mid-rail and fixed 4" toeboards to prevent objects from rolling off. Usable width is 19<sup>5</sup>/<sub>16</sub>" between handrails. Heavy-duty uniform capacity rating of 350 pounds per unit. Includes lag-down points for securing to floor, mounting hardware not included. Steel construction with baked-in powder-coated toughness. Ships knockdown. Meets ANSI A14.7 and OSHA STD 01-01-011 standards.

| MODEL NUMBER | NUMBER OF STEPS | OVERALL HEIGHT                    | CLEAR HEIGHT                     | CLEAR SPAN                        | OVERALL SPAN                      | STEP ANGLE | WEIGHT (POUND) |
|--------------|-----------------|-----------------------------------|----------------------------------|-----------------------------------|-----------------------------------|------------|----------------|
| COLA-2-56-20 | 4               | 72"                               | 27"                              | 22 <sup>1</sup> / <sub>4</sub> "  | 78 <sup>1</sup> / <sub>8</sub> "  | 56°        | 324            |
| COLA-2-56-32 | 4               | 72"                               | 27"                              | 29 <sup>1</sup> / <sub>4</sub> "  | 85 <sup>1</sup> / <sub>4</sub> "  | 56°        | 357            |
| COLA-2-56-44 | 4               | 72"                               | 27"                              | 36 <sup>1</sup> / <sub>4</sub> "  | 92 <sup>1</sup> / <sub>8</sub> "  | 56°        | 390            |
| COLA-2-56-56 | 4               | 72"                               | 27"                              | 50 <sup>1</sup> / <sub>4</sub> "  | 106 <sup>1</sup> / <sub>8</sub> " | 56°        | 423            |
| COLA-2-68-20 | 4               | 72 <sup>1</sup> / <sub>2</sub> "  | 27"                              | 20"                               | 65"                               | 68°        | 296            |
| COLA-2-68-32 | 4               | 72 <sup>1</sup> / <sub>2</sub> "  | 27"                              | 27"                               | 72"                               | 68°        | 329            |
| COLA-2-68-44 | 4               | 72 <sup>1</sup> / <sub>2</sub> "  | 27"                              | 34"                               | 79"                               | 68°        | 362            |
| COLA-2-68-56 | 4               | 72 <sup>1</sup> / <sub>2</sub> "  | 27"                              | 48"                               | 93"                               | 68°        | 396            |
| COLA-3-56-20 | 5               | 80"                               | 35"                              | 22 <sup>1</sup> / <sub>2</sub> "  | 88"                               | 56°        | 324            |
| COLA-3-56-32 | 5               | 80"                               | 35"                              | 29 <sup>1</sup> / <sub>2</sub> "  | 95"                               | 56°        | 357            |
| COLA-3-56-44 | 5               | 80"                               | 35"                              | 36 <sup>1</sup> / <sub>2</sub> "  | 102"                              | 56°        | 390            |
| COLA-3-56-56 | 5               | 80"                               | 35"                              | 50 <sup>1</sup> / <sub>2</sub> "  | 116"                              | 56°        | 423            |
| COLA-3-68-20 | 5               | 80 <sup>1</sup> / <sub>2</sub> "  | 35"                              | 20 <sup>1</sup> / <sub>16</sub> " | 65"                               | 68°        | 296            |
| COLA-3-68-32 | 5               | 80 <sup>1</sup> / <sub>2</sub> "  | 35"                              | 27 <sup>1</sup> / <sub>16</sub> " | 72"                               | 68°        | 329            |
| COLA-3-68-44 | 5               | 80 <sup>1</sup> / <sub>2</sub> "  | 35"                              | 34 <sup>1</sup> / <sub>16</sub> " | 79"                               | 68°        | 362            |
| COLA-3-68-56 | 5               | 80 <sup>1</sup> / <sub>2</sub> "  | 35"                              | 48 <sup>1</sup> / <sub>16</sub> " | 93"                               | 68°        | 363            |
| COLA-4-56-20 | 7               | 90 <sup>1</sup> / <sub>2</sub> "  | 45 <sup>3</sup> / <sub>8</sub> " | 21 <sup>3</sup> / <sub>4</sub> "  | 89 <sup>1</sup> / <sub>4</sub> "  | 56°        | 324            |
| COLA-4-56-32 | 7               | 90 <sup>1</sup> / <sub>2</sub> "  | 45 <sup>3</sup> / <sub>8</sub> " | 28 <sup>3</sup> / <sub>4</sub> "  | 96 <sup>1</sup> / <sub>4</sub> "  | 56°        | 357            |
| COLA-4-56-44 | 7               | 90 <sup>1</sup> / <sub>2</sub> "  | 45 <sup>3</sup> / <sub>8</sub> " | 35 <sup>3</sup> / <sub>4</sub> "  | 103 <sup>1</sup> / <sub>4</sub> " | 56°        | 390            |
| COLA-4-56-56 | 7               | 90 <sup>1</sup> / <sub>2</sub> "  | 45 <sup>3</sup> / <sub>8</sub> " | 49 <sup>3</sup> / <sub>4</sub> "  | 117 <sup>1</sup> / <sub>4</sub> " | 56°        | 423            |
| COLA-4-68-20 | 7               | 91"                               | 45 <sup>3</sup> / <sub>8</sub> " | 19 <sup>1</sup> / <sub>2</sub> "  | 68 <sup>1</sup> / <sub>2</sub> "  | 68°        | 353            |
| COLA-4-68-32 | 7               | 91"                               | 45 <sup>3</sup> / <sub>8</sub> " | 26 <sup>1</sup> / <sub>2</sub> "  | 75 <sup>1</sup> / <sub>2</sub> "  | 68°        | 361            |
| COLA-4-68-44 | 7               | 91"                               | 45 <sup>3</sup> / <sub>8</sub> " | 33 <sup>1</sup> / <sub>2</sub> "  | 82 <sup>1</sup> / <sub>2</sub> "  | 68°        | 362            |
| COLA-4-68-56 | 7               | 91"                               | 45 <sup>3</sup> / <sub>8</sub> " | 47 <sup>1</sup> / <sub>2</sub> "  | 96 <sup>1</sup> / <sub>2</sub> "  | 68°        | 396            |
| COLA-5-56-20 | 8               | 102 <sup>1</sup> / <sub>2</sub> " | 57 <sup>1</sup> / <sub>2</sub> " | 22 <sup>1</sup> / <sub>2</sub> "  | 104 <sup>1</sup> / <sub>2</sub> " | 56°        | 401            |
| COLA-5-56-32 | 8               | 102 <sup>1</sup> / <sub>2</sub> " | 57 <sup>1</sup> / <sub>2</sub> " | 29 <sup>1</sup> / <sub>2</sub> "  | 111 <sup>1</sup> / <sub>2</sub> " | 56°        | 413            |
| COLA-5-56-44 | 8               | 102 <sup>1</sup> / <sub>2</sub> " | 57 <sup>1</sup> / <sub>2</sub> " | 36 <sup>1</sup> / <sub>2</sub> "  | 118 <sup>1</sup> / <sub>2</sub> " | 56°        | 424            |
| COLA-5-56-56 | 8               | 102 <sup>1</sup> / <sub>2</sub> " | 57 <sup>1</sup> / <sub>2</sub> " | 50 <sup>1</sup> / <sub>2</sub> "  | 132 <sup>1</sup> / <sub>2</sub> " | 56°        | 456            |
| COLA-5-68-20 | 8               | 103"                              | 57 <sup>3</sup> / <sub>8</sub> " | 20"                               | 77 <sup>1</sup> / <sub>2</sub> "  | 68°        | 363            |
| COLA-5-68-32 | 8               | 103"                              | 57 <sup>3</sup> / <sub>8</sub> " | 27"                               | 84 <sup>1</sup> / <sub>2</sub> "  | 68°        | 387            |
| COLA-5-68-44 | 8               | 103"                              | 57 <sup>3</sup> / <sub>8</sub> " | 34"                               | 91 <sup>1</sup> / <sub>2</sub> "  | 68°        | 388            |
| COLA-5-68-56 | 8               | 103"                              | 57 <sup>3</sup> / <sub>8</sub> " | 48"                               | 105 <sup>1</sup> / <sub>2</sub> " | 68°        | 430            |
| COLA-6-56-20 | 10              | 114 <sup>1</sup> / <sub>2</sub> " | 69 <sup>1</sup> / <sub>2</sub> " | 22"                               | 122"                              | 56°        | 427            |
| COLA-6-56-32 | 10              | 114 <sup>1</sup> / <sub>2</sub> " | 69 <sup>1</sup> / <sub>2</sub> " | 29"                               | 129"                              | 56°        | 429            |
| COLA-6-56-44 | 10              | 114 <sup>1</sup> / <sub>2</sub> " | 69 <sup>1</sup> / <sub>2</sub> " | 36"                               | 136"                              | 56°        | 462            |
| COLA-6-56-56 | 10              | 114 <sup>1</sup> / <sub>2</sub> " | 69 <sup>1</sup> / <sub>2</sub> " | 50"                               | 150"                              | 56°        | 495            |
| COLA-6-68-20 | 10              | 115"                              | 69 <sup>3</sup> / <sub>8</sub> " | 19 <sup>3</sup> / <sub>4</sub> "  | 87 <sup>1</sup> / <sub>2</sub> "  | 68°        | 366            |
| COLA-6-68-32 | 10              | 115"                              | 69 <sup>3</sup> / <sub>8</sub> " | 26 <sup>3</sup> / <sub>4</sub> "  | 94 <sup>1</sup> / <sub>2</sub> "  | 68°        | 372            |
| COLA-6-68-44 | 10              | 115"                              | 69 <sup>3</sup> / <sub>8</sub> " | 33 <sup>3</sup> / <sub>4</sub> "  | 101 <sup>1</sup> / <sub>2</sub> " | 68°        | 431            |
| COLA-6-68-56 | 10              | 115"                              | 69 <sup>3</sup> / <sub>8</sub> " | 47 <sup>3</sup> / <sub>4</sub> "  | 115 <sup>1</sup> / <sub>2</sub> " | 68°        | 464            |
| COLA-7-56-20 | 12              | 126 <sup>1</sup> / <sub>2</sub> " | 81 <sup>3</sup> / <sub>8</sub> " | 21 <sup>3</sup> / <sub>4</sub> "  | 137 <sup>1</sup> / <sub>2</sub> " | 56°        | 433            |
| COLA-7-56-32 | 12              | 126 <sup>1</sup> / <sub>2</sub> " | 81 <sup>3</sup> / <sub>8</sub> " | 28 <sup>3</sup> / <sub>4</sub> "  | 144 <sup>1</sup> / <sub>2</sub> " | 56°        | 466            |
| COLA-7-56-44 | 12              | 126 <sup>1</sup> / <sub>2</sub> " | 81 <sup>3</sup> / <sub>8</sub> " | 35 <sup>3</sup> / <sub>4</sub> "  | 151 <sup>1</sup> / <sub>2</sub> " | 56°        | 499            |
| COLA-7-56-56 | 12              | 126 <sup>1</sup> / <sub>2</sub> " | 81 <sup>3</sup> / <sub>8</sub> " | 49 <sup>3</sup> / <sub>4</sub> "  | 165 <sup>1</sup> / <sub>2</sub> " | 56°        | 532            |
| COLA-7-68-20 | 12              | 127"                              | 81 <sup>1</sup> / <sub>2</sub> " | 19 <sup>3</sup> / <sub>4</sub> "  | 97 <sup>3</sup> / <sub>8</sub> "  | 68°        | 400            |
| COLA-7-68-32 | 12              | 127"                              | 81 <sup>1</sup> / <sub>2</sub> " | 26 <sup>3</sup> / <sub>4</sub> "  | 104 <sup>3</sup> / <sub>8</sub> " | 68°        | 444            |
| COLA-7-68-44 | 12              | 127"                              | 81 <sup>1</sup> / <sub>2</sub> " | 33 <sup>3</sup> / <sub>4</sub> "  | 111 <sup>3</sup> / <sub>8</sub> " | 68°        | 475            |
| COLA-7-68-56 | 12              | 127"                              | 81 <sup>1</sup> / <sub>2</sub> " | 47 <sup>3</sup> / <sub>4</sub> "  | 125 <sup>3</sup> / <sub>8</sub> " | 68°        | 499            |

## Tank Access Ladders

The NTAL Tank Access Ladders have a unique modular design for inspecting storage tanks. The rungs are offset to protect knuckles and are made from non-slip steel material. This ladder has a durable welded steel construction and a baked-in powder-coated toughness. Uniform capacity is 300 pounds. Models with 10 to 15 rungs ship knockdown.



| MODEL NUMBER | OVERALL HEIGHT (FT.) | NUMBER OF RUNGS | OVERALL WIDTH | USABLE WIDTH | WEIGHT (POUND) |
|--------------|----------------------|-----------------|---------------|--------------|----------------|
| NTAL-7       | 7                    | 7               | 14"           | 13"          | 69             |
| NTAL-10      | 10                   | 10              | 14"           | 13"          | 128            |
| NTAL-12      | 12                   | 12              | 14"           | 13"          | 138            |
| NTAL-15      | 15                   | 15              | 14"           | 13"          | 148            |



model NTAL-7



## Walk-Thru Style Dock Ladders

Prevent needless dock injuries with Walk-Thru Style Dock Ladders. Constructed of steel pipe. Mount ladder directly to the dock face by either welding or bolting on. The top half of each step is covered with a slip resistant material for extra safety during climbing and descending of the ladder. The extra high handrail provides maximum assistance and safety. All ladders project 8 $\frac{3}{8}$ " out from face of dock. Uniform capacity is 300 pounds. Models with 5 - 10 steps ship knockdown. Some assembly required. Baked-in powder-coated toughness.

| MODEL NUMBER | OVERALL SIZE (W x H)                      | NUMBER OF RUNGS | TOP STEP HEIGHT | WIDTH OF STEP | DISTANCE BETWEEN STEP | WEIGHT (POUND) |
|--------------|---|-----------------|-----------------|---------------|-----------------------|----------------|
| DKL-2        | 20 $\frac{7}{16}$ " x 65 $\frac{1}{2}$ "  | 2               | 15"             | 18"           | 12"                   | 86             |
| DKL-3        | 20 $\frac{7}{16}$ " x 77 $\frac{1}{2}$ "  | 3               | 27"             | 18"           | 12"                   | 89             |
| DKL-4        | 20 $\frac{7}{16}$ " x 89 $\frac{1}{2}$ "  | 4               | 39"             | 18"           | 12"                   | 92             |
| DKL-5        | 20 $\frac{7}{16}$ " x 101 $\frac{1}{2}$ " | 5               | 51"             | 18"           | 12"                   | 96             |
| DKL-6        | 20 $\frac{7}{16}$ " x 113 $\frac{1}{2}$ " | 6               | 63"             | 18"           | 12"                   | 98             |
| DKL-7        | 20 $\frac{7}{16}$ " x 125 $\frac{1}{2}$ " | 7               | 75"             | 18"           | 12"                   | 118            |
| DKL-8        | 20 $\frac{7}{16}$ " x 137 $\frac{1}{2}$ " | 8               | 87"             | 18"           | 12"                   | 121            |
| DKL-9        | 20 $\frac{7}{16}$ " x 149 $\frac{1}{2}$ " | 9               | 99"             | 18"           | 12"                   | 123            |
| DKL-10       | 20 $\frac{7}{16}$ " x 161 $\frac{1}{2}$ " | 10              | 111"            | 18"           | 12"                   | 148            |



model DKL-4

## Aluminum Telescopic Ladders

Ideal when storage space is limited. The lightweight and low profile design allows for storage in closets or tight spaces. Each step is serrated and has a spring loaded locking pin that automatically engages to secure step height. The release mechanism provides a smooth automatic closing design. These ladders extend in 12" increments. Top bumper guards and molded rubber feet protect walls and floors against scratches. Meets OSHA and ANSI specifications.



model TLAD-10



model TLAD-12



model TLAD-12-1A



model TLAD-15-1

| MODEL NUMBER         | TOP STEP HEIGHT | CLOSED SIZE (W x D x H)                      | STEP DEPTH        | UNIFORM CAPACITY | WEIGHT (POUND) |
|----------------------|-----------------|--|-------------------|------------------|----------------|
| TLAD-10 <sup>Ⓢ</sup> | 6 in. - 10 ft.  | 18 $\frac{1}{2}$ " x 2 $\frac{3}{4}$ " x 29" | 1 $\frac{1}{2}$ " | 225 lb.          | 24             |
| TLAD-12 <sup>Ⓢ</sup> | 6 in. - 12 ft.  | 19 $\frac{1}{4}$ " x 3 $\frac{1}{2}$ " x 32" | 1 $\frac{1}{2}$ " | 225 lb.          | 30             |
| TLAD-12-1A           | 6 in. - 12 ft.  | 18" x 4" x 32"                               | 1 $\frac{1}{2}$ " | 300 lb.          | 36             |
| TLAD-15-1            | 6 in. - 15 ft.  | 19" x 4" x 36"                               | 1 $\frac{1}{2}$ " | 250 lb.          | 40             |





### Folding Ladders with Wheels

Locking foldable design saves on storage space when ladder is not in use. Ladder folds after unlocking one spring-loaded detent pin. Once unit is folded, tilt back on wheels for easy portability. Available in either carbon steel or stainless steel. The steps are perforated to provide a non-slip surface. The ladders have 7" deep steps and a climb angle of 58°. Stainless steel models are a 202 grade. Complies with ANSI 14.7 and OSHA 1910.29 specifications.

| NUMBER OF STEPS | TOP STEP HEIGHT                  | UNIFORM CAPACITY | WEIGHT (POUND) | MODEL NUMBER CARBON STEEL | MODEL NUMBER STAINLESS STEEL |
|-----------------|----------------------------------|------------------|----------------|---------------------------|------------------------------|
| 2               | 20 <sup>5</sup> / <sub>8</sub> " | 350 lb.          | 31             | FLAD-2                    | FLAD-2-SS                    |
| 3               | 30 <sup>1</sup> / <sub>4</sub> " | 350 lb.          | 39             | FLAD-3                    | FLAD-3-SS                    |
| 4               | 39 <sup>7</sup> / <sub>8</sub> " | 350 lb.          | 47             | FLAD-4                    | FLAD-4-SS                    |



### Aluminum Ladder/Carts

These well built Aluminum Ladder/Carts are great for home, office, or store. Rugged aluminum construction is strong and lightweight. Converts in seconds from ladder to cart. Ladder uniform capacity is 250 lb., while the hand truck uniform capacity is 130 lb. Nose plate measures 15" wide. Units roll smoothly on 4" wheels.

| MODEL NUMBER | NO. OF STEPS | OVERALL LADDER (W x D x H) | OVERALL CART (W x D x H) | OVERALL FOLDED SIZE (W x D x H) | WEIGHT (POUND) |
|--------------|--------------|----------------------------|--------------------------|---------------------------------|----------------|
| C-130-2      | 2            | 18½" x 20" x 37"           | 18½" x 14" x 39"         | 18½" x 3½" x 39"                | 17             |
| C-130-3      | 3            | 18½" x 29" x 47"           | 18½" x 18" x 50"         | 18½" x 3½" x 50"                | 22             |



### Aluminum Step Stands

Ideal for industrial or commercial applications. Strong design yields a uniform capacity of 500 pounds, but is lighter than comparable steel models. Open step design includes extra heavy duty serrated surface for traction. With rubber tipped legs, this step ladder is ideal for use on many types of floors. Complies with OSHA 1910.24 specifications.



| RAW ALUMINUM FINISH       |              |   |               |                |
|---------------------------|--------------|---|---------------|----------------|
| MODEL NUMBER              | NO. OF STEPS | OVERALL SIZE (W x D x H)  | ASSEMBLY      | WEIGHT (POUND) |
| SSA-1                     | 1            | 22 <sup>13</sup> / <sub>16</sub> " x 14 <sup>7</sup> / <sub>8</sub> " x 10 <sup>7</sup> / <sub>16</sub> " | WELDED        | 13             |
| SSA-1W                    | 1            | 32 <sup>13</sup> / <sub>16</sub> " x 14 <sup>7</sup> / <sub>8</sub> " x 10 <sup>7</sup> / <sub>16</sub> " | WELDED        | 13             |
| SSA-2                     | 2            | 22 <sup>13</sup> / <sub>16</sub> " x 24 <sup>9</sup> / <sub>16</sub> " x 20"                              | WELDED        | 14             |
| SSA-2W                    | 2            | 32 <sup>13</sup> / <sub>16</sub> " x 24 <sup>9</sup> / <sub>16</sub> " x 20"                              | WELDED        | 19             |
| SSA-3                     | 3            | 22 <sup>13</sup> / <sub>16</sub> " x 34 <sup>9</sup> / <sub>16</sub> " x 20"                              | WELDED        | 27             |
| SSA-3W                    | 3            | 32 <sup>13</sup> / <sub>16</sub> " x 34 <sup>9</sup> / <sub>16</sub> " x 30"                              | WELDED        | 29             |
| SSA-2-KD                  | 2            | 22 <sup>13</sup> / <sub>16</sub> " x 24 <sup>9</sup> / <sub>16</sub> " x 20"                              | BOLT TOGETHER | 14             |
| SSA-2W-KD                 | 2            | 32 <sup>13</sup> / <sub>16</sub> " x 24 <sup>9</sup> / <sub>16</sub> " x 20"                              | BOLT TOGETHER | 19             |
| SSA-3-KD                  | 3            | 22 <sup>13</sup> / <sub>16</sub> " x 34 <sup>9</sup> / <sub>16</sub> " x 30"                              | BOLT TOGETHER | 29             |
| SSA-3W-KD                 | 3            | 32 <sup>13</sup> / <sub>16</sub> " x 34 <sup>9</sup> / <sub>16</sub> " x 30"                              | BOLT TOGETHER | 29             |
| YELLOW POWDER COAT FINISH |              |   |               |                |
| SSA-1-Y                   | 1            | 22 <sup>13</sup> / <sub>16</sub> " x 14 <sup>7</sup> / <sub>8</sub> " x 10 <sup>7</sup> / <sub>16</sub> " | WELDED        | 13             |
| SSA-1W-Y                  | 1            | 32 <sup>13</sup> / <sub>16</sub> " x 14 <sup>7</sup> / <sub>8</sub> " x 10 <sup>7</sup> / <sub>16</sub> " | WELDED        | 13             |
| SSA-2-Y                   | 2            | 22 <sup>13</sup> / <sub>16</sub> " x 24 <sup>9</sup> / <sub>16</sub> " x 20"                              | WELDED        | 14             |
| SSA-2W-Y                  | 2            | 32 <sup>13</sup> / <sub>16</sub> " x 24 <sup>9</sup> / <sub>16</sub> " x 20"                              | WELDED        | 14             |
| SSA-3-Y                   | 3            | 22 <sup>13</sup> / <sub>16</sub> " x 34 <sup>9</sup> / <sub>16</sub> " x 20"                              | WELDED        | 27             |
| SSA-3W-Y                  | 3            | 32 <sup>13</sup> / <sub>16</sub> " x 34 <sup>9</sup> / <sub>16</sub> " x 30"                              | WELDED        | 30             |
| SSA-2-KD-Y                | 2            | 22 <sup>13</sup> / <sub>16</sub> " x 24 <sup>9</sup> / <sub>16</sub> " x 20"                              | BOLT TOGETHER | 14             |
| SSA-2W-KD-Y               | 2            | 32 <sup>13</sup> / <sub>16</sub> " x 24 <sup>9</sup> / <sub>16</sub> " x 20"                              | BOLT TOGETHER | 14             |
| SSA-3-KD-Y                | 3            | 22 <sup>13</sup> / <sub>16</sub> " x 34 <sup>9</sup> / <sub>16</sub> " x 30"                              | BOLT TOGETHER | 29             |
| SSA-3W-KD-Y               | 3            | 32 <sup>13</sup> / <sub>16</sub> " x 34 <sup>9</sup> / <sub>16</sub> " x 30"                              | BOLT TOGETHER | 29             |

## Fiberglass Twin Front Ladders

Fiberglass Twin Front Ladders are made of non-conductive fiberglass industrial material. They are extra-heavy duty, capable of supporting 300 lb. uniform capacity. These ladders are equipped with slip resistant footing, heavy steel hinges, and inside spreader braces. Steps are on both sides of the ladder to make it easy for two people to work on the same project.

| MODEL NUMBER | OVERALL HEIGHT (FT.) | BOTTOM WIDTH                      | STEP DEPTH | APPROXIMATE SPREAD                 | WEIGHT (POUND) |
|--------------|----------------------|-----------------------------------|------------|------------------------------------|----------------|
| FBTFL-4      | 4                    | 19 <sup>9</sup> / <sub>16</sub> " | 3"         | 37 <sup>1</sup> / <sub>2</sub> "   | 18             |
| FBTFL-5      | 5                    | 21 <sup>1</sup> / <sub>16</sub> " | 3"         | 44 <sup>7</sup> / <sub>8</sub> "   | 22             |
| FBTFL-6      | 6                    | 22 <sup>9</sup> / <sub>16</sub> " | 3"         | 52 <sup>5</sup> / <sub>16</sub> "  | 27             |
| FBTFL-7      | 7                    | 24 <sup>1</sup> / <sub>16</sub> " | 3"         | 59 <sup>11</sup> / <sub>16</sub> " | 30             |
| FBTFL-8      | 8                    | 25 <sup>9</sup> / <sub>16</sub> " | 3"         | 67 <sup>1</sup> / <sub>8</sub> "   | 34             |
| FBTFL-10     | 10                   | 28 <sup>9</sup> / <sub>16</sub> " | 3"         | 81 <sup>5</sup> / <sub>16</sub> "  | 44             |
| FBTFL-12     | 12                   | 31 <sup>9</sup> / <sub>16</sub> " | 3"         | 96 <sup>3</sup> / <sub>4</sub> "   | 62             |



Capacity:  
300 lbs



model  
FBTFL-6

## Fiberglass Extension Ladders with Aluminum Rungs

These Extension Ladders feature the Pro Top and have a 300 lb. uniform capacity. They are equipped with the exclusive Rung Lock Quickclatch, a quick and easy locking method for securing sections when the ladder is extended. The ladder also has the premium feature of a full metal plate that is wrapped around the rail for protection and durability. Pro Top features V-shape design for stability on corners, and soft non-marking/non-marring rubber tread protects work surface.

| MODEL NUMBER | OVERALL HEIGHT (FT.) | LENGTH EACH SECTION (FT.) | HEIGHT TO TOP STEP (FT.) | WEIGHT (POUND) |
|--------------|----------------------|---------------------------|--------------------------|----------------|
| EXL-24       | 24                   | 12                        | 21                       | 51             |
| EXL-28       | 28                   | 14                        | 25                       | 59             |
| EXL-32       | 32                   | 16                        | 29                       | 70             |

Capacity:  
300 lbs



V-SHAPE DESIGN FOR  
STABILITY ON CORNERS



## Fiberglass Step Ladders

Fiberglass Step Ladders are made of a non-conductive fiberglass industrial material. They are extra heavy duty, capable of supporting 300 lb. uniform capacity. These ladders are equipped with slip resistant footing and a non-conductive structural molded top with tool slots to help keep tools close at hand.

| MODEL NUMBER | OVERALL HEIGHT (FT.) | BOTTOM WIDTH                      | STEP DEPTH | APPROXIMATE SPREAD                 | WEIGHT (POUND) |
|--------------|----------------------|-----------------------------------|------------|------------------------------------|----------------|
| FBSL-4       | 4                    | 19 <sup>9</sup> / <sub>16</sub> " | 3"         | 28 <sup>15</sup> / <sub>16</sub> " | 14             |
| FBSL-5       | 5                    | 21 <sup>1</sup> / <sub>16</sub> " | 3"         | 34 <sup>7</sup> / <sub>8</sub> "   | 17             |
| FBSL-6       | 6                    | 22 <sup>9</sup> / <sub>16</sub> " | 3"         | 40 <sup>7</sup> / <sub>8</sub> "   | 20             |
| FBSL-7       | 7                    | 24 <sup>1</sup> / <sub>16</sub> " | 3"         | 43 <sup>13</sup> / <sub>16</sub> " | 22             |
| FBSL-8       | 8                    | 25 <sup>9</sup> / <sub>16</sub> " | 3"         | 52 <sup>3</sup> / <sub>4</sub> "   | 26             |
| FBSL-10      | 10                   | 28 <sup>9</sup> / <sub>16</sub> " | 3"         | 64 <sup>11</sup> / <sub>16</sub> " | 34             |
| FBSL-12      | 12                   | 31 <sup>9</sup> / <sub>16</sub> " | 3"         | 76 <sup>1</sup> / <sub>8</sub> "   | 47             |



model FBSL-6

Capacity:  
300 lbs

## Fiberglass Industrial Step Stands

Fiberglass Industrial Step Stands fold easily for easy transport and storage. These step stands are non-conductive fiberglass heavy duty, multi-purpose industrial material, with a 300 lb. uniform capacity. Units include a large molded top and double rivet construction.

| MODEL NUMBER | OVERALL HEIGHT (FT.) | TOP STEP HEIGHT                  | TOP SIZE (W x D)                      | WEIGHT (POUND) |
|--------------|----------------------|----------------------------------|---------------------------------------|----------------|
| FBSS-1       | 1                    | 13"                              | 14" x 9 <sup>1</sup> / <sub>4</sub> " | 8              |
| FBSS-2       | 2                    | 22 <sup>3</sup> / <sub>4</sub> " | 14" x 9 <sup>1</sup> / <sub>4</sub> " | 15             |
| FBSS-3       | 3                    | 34"                              | 14" x 9 <sup>1</sup> / <sub>4</sub> " | 20             |
| FBSS-4       | 4                    | 45 <sup>1</sup> / <sub>4</sub> " | 14" x 9 <sup>1</sup> / <sub>4</sub> " | 25             |

model FBSS-2

Capacity:  
300 lbs





Capacity:  
**375 lbs**

model PFSL-4



Capacity:  
**300 lbs**

model AISS-2



model  
AFSP-2

TOOL TRAY

model  
AFSP-2-TT

48 Hours  
to Ship



TILT AND ROLL UNIT FROM  
LOCATION TO LOCATION

POWDER  
COATED  
TOUGH

model RLAD-2-Y



model FT-SS-1

model FT-SS-1HR

## Aluminum Platform Ladders

These lightweight Aluminum Industrial Platform Ladders have a 375 lb. uniform capacity and are designed with extra heavy duty side rails. They also have a slip resistant platform and rubber feet. Top platform has a guard rail for added protection. These ladders meet the most demanding industrial and contracting applications.

| MODEL NUMBER | OVERALL HEIGHT (FT.) | HEIGHT TO PLATFORM (FT.) | BOTTOM WIDTH | STEP DEPTH | APPROXIMATE SPREAD | WEIGHT (POUND) |
|--------------|----------------------|--------------------------|--------------|------------|--------------------|----------------|
| PFSL-4       | 6                    | 4                        | 24½"         | 3"         | 43¾"               | 23             |
| PFSL-6       | 8                    | 6                        | 27½"         | 3"         | 54¾"               | 30             |
| PFSL-8       | 10                   | 8                        | 30½"         | 3"         | 65¾"               | 40             |

## Aluminum Industrial Step Stands

Aluminum Industrial Step Stands fold easily for easy transport and storage. Multi-purpose industrial step stand is lightweight and has a 300 lb. uniform capacity. Units include a large molded top and double rivet construction.

| MODEL NUMBER | OVERALL HEIGHT (FT.) | TOP STEP HEIGHT | TOP SIZE (W x D) | WEIGHT (POUND) |
|--------------|----------------------|-----------------|------------------|----------------|
| AISS-1       | 1.083                | 11½"            | 14" x 9¼"        | 8              |
| AISS-2       | 1.916                | 22¾"            | 14" x 9¼"        | 14             |
| AISS-3       | 2.833                | 34"             | 14" x 9¼"        | 19             |
| AISS-4       | 3.790                | 45¼"            | 14" x 9¼"        | 24             |

## Aluminum Folding Step Platforms

Perfect for getting that extra reach when pulling parts, painting, washing vehicles, or maintenance needs. Non-skid feet on each leg provides a secure grip. Will not mar expensive epoxy garage floors. Lightweight construction for easy transport. When not needed, the legs fold under the platform for easy storage. Platform size is 15<sup>1</sup>/<sub>16</sub>" wide by 35<sup>1</sup>/<sub>16</sub>" long. Uniform capacity is 250 lb.

| MODEL NUMBER | OVERALL SIZE (W x L x H)** | OVERALL SIZE (W x L x H)*  | WEIGHT (POUND) |
|--------------|----------------------------|--|----------------|
| AFSP-2       | 18¼" x 36½" x 5¼"          | 19 <sup>15</sup> / <sub>16</sub> " x 47 <sup>7</sup> / <sub>16</sub> " x 19 <sup>7</sup> / <sub>16</sub> " | 17             |
| AFSP-2-TT    | 18¼" x 36½" x 5¼"          | 19 <sup>13</sup> / <sub>16</sub> " x 47¼" x 50 <sup>5</sup> / <sub>16</sub> "                              | 29             |

\*WHEN IN USE / \*\*FOLDED (EXCLUDING TOOL TRAY)

## Portable Two-Step Ladders

Mobile two-step design for access to hard-to-reach places. Tubular steel construction. Two styles to choose from - rubber matting or perforated steel. Top step height is 20" and step measures 16" wide by 8" deep. Two rigid wheels allow for easy tilt and roll portability. Uniform capacity is 300 pounds. Ships knock down for lower shipping costs. Baked-in powder-coated toughness.

| MODEL NUMBER | STEP STYLE | OVERALL SIZE (W x D x H)   | COLOR  | WEIGHT (POUND) |
|--------------|------------|--|--------|----------------|
| RLAD-2-Y     | RUBBER     | 20 <sup>9</sup> / <sub>16</sub> " x 23 <sup>1</sup> / <sub>2</sub> " x 42" | YELLOW | 33             |
| RLAD-2-B     | RUBBER     | 20 <sup>9</sup> / <sub>16</sub> " x 23 <sup>1</sup> / <sub>2</sub> " x 42" | BLUE   | 33             |
| RLAD-P-2-Y   | PERFORATED | 20 <sup>9</sup> / <sub>16</sub> " x 23 <sup>1</sup> / <sub>2</sub> " x 42" | YELLOW | 39             |
| RLAD-P-2-B   | PERFORATED | 20 <sup>9</sup> / <sub>16</sub> " x 23 <sup>1</sup> / <sub>2</sub> " x 42" | BLUE   | 39             |

## Stainless Steel Step Stands

The Stainless Steel Step Stands are ideal for the school, home, or industrial facilities. The stainless steel construction is durable and long lasting in the harshest of conditions. Both models contain a slip resistant tread for stability. Model FT-SS-1HR includes a handrail for better personal steadiness when reaching for high objects. Uniform capacity is 250 pounds.

| MODEL NUMBER | DESCRIPTION            | OVERALL SIZE (W x D x H) | WEIGHT (POUND) |
|--------------|------------------------|--------------------------|----------------|
| FT-SS-1      | STEP STAND             | 15" x 11¼" x 11"         | 16             |
| FT-SS-1HR    | STEP STAND W/ HANDRAIL | 16¼" x 11¼" x 37"        | 18             |
| FT-SS-1-HDL  | HANDLE ONLY            |                          | 2              |

## Rolling Step Stools (over 17 inches high)

Convenient and easy to use. Spring loaded casters along with a rubber ring around the base provide the extra grip needed when being used. Each step includes a rubber surface. Steel construction with powder coat finish. Uniform capacity is 500 pounds. Easily assembles without need for tools.

| ITEM | MODEL NUMBER            | COLOR  | TOP STEP HEIGHT                  | BOTTOM STEP HEIGHT              | TOP STEP DIAMETER                | BASE DIAMETER                    | WEIGHT (POUND) |
|------|-------------------------|--------|----------------------------------|---------------------------------|----------------------------------|----------------------------------|----------------|
| A    | STEP-17-Y <sup>Ⓢ</sup>  | YELLOW | 17 <sup>1</sup> / <sub>8</sub> " | 8 <sup>7</sup> / <sub>8</sub> " | 11 <sup>3</sup> / <sub>8</sub> " | 17 <sup>7</sup> / <sub>8</sub> " | 11             |
| B    | STEP-17-R <sup>Ⓢ</sup>  | RED    | 17 <sup>1</sup> / <sub>8</sub> " | 8 <sup>7</sup> / <sub>8</sub> " | 11 <sup>3</sup> / <sub>8</sub> " | 17 <sup>7</sup> / <sub>8</sub> " | 11             |
| C    | STEP-17-GY <sup>Ⓢ</sup> | GRAY   | 17 <sup>1</sup> / <sub>8</sub> " | 8 <sup>7</sup> / <sub>8</sub> " | 11 <sup>3</sup> / <sub>8</sub> " | 17 <sup>7</sup> / <sub>8</sub> " | 11             |
| D    | STEP-17-BK <sup>Ⓢ</sup> | BLACK  | 17 <sup>1</sup> / <sub>8</sub> " | 8 <sup>7</sup> / <sub>8</sub> " | 11 <sup>3</sup> / <sub>8</sub> " | 17 <sup>7</sup> / <sub>8</sub> " | 11             |



## Polyethylene Step Stools

When items are out of reach, do not strain, simply step up with one of our Polyethylene Step Stools. The two and three step units have rear opening access storage compartments. The four step unit comes with handrails. All models have rubber feet and a non-skid tape surface. Hand holes are standard for easy one person transportation.

| MODEL NUMBER         | COLOR  | BASE SIZE (W x D)   | TOP STEP (W x D x H)   | UNIFORM CAPACITY | WEIGHT (POUND) |
|----------------------|--------|---|--|------------------|----------------|
| VST-1-Y <sup>Ⓢ</sup> | YELLOW | 19 <sup>1</sup> / <sub>2</sub> " x 13 <sup>3</sup> / <sub>4</sub> " | 17 <sup>1</sup> / <sub>2</sub> " x 12" x 11 <sup>1</sup> / <sub>2</sub> "                              | 500 lb.          | 10             |
| VST-2-Y <sup>Ⓢ</sup> | YELLOW | 21" x 24"   | 17 <sup>1</sup> / <sub>2</sub> " x 12" x 19 <sup>1</sup> / <sub>4</sub> "                              | 500 lb.          | 20             |
| VST-3-Y <sup>Ⓢ</sup> | YELLOW | 21" x 34"   | 17 <sup>1</sup> / <sub>2</sub> " x 11 <sup>1</sup> / <sub>2</sub> " x 28 <sup>1</sup> / <sub>4</sub> " | 500 lb.          | 31             |
| VST-4-Y              | YELLOW | 22 <sup>1</sup> / <sub>4</sub> " x 43 <sup>1</sup> / <sub>4</sub> " | 17 <sup>3</sup> / <sub>8</sub> " x 13 <sup>1</sup> / <sub>8</sub> " x 38 <sup>3</sup> / <sub>4</sub> " | 500 lb.          | 100            |



## Nestable Step Stools

These Nestable Step Stools help you obtain products that are out of reach. These step stools have larger platform with rubber inserts for more stability, and are nestable for easy storage. They come with a strap on each side for easy handling.

| MODEL NUMBER | COLOR  | NO. OF STEPS | OVERALL SIZE (W x D x H) | UNIFORM CAPACITY | WEIGHT (POUND) |
|--------------|--------|--------------|--------------------------|------------------|----------------|
| VNST-1       | YELLOW | 1            | 25" x 25" x 10"          | 500 lb.          | 10             |
| VNST-2       | YELLOW | 2            | 26" x 33" x 20"          | 500 lb.          | 19             |



## Fold-Up Step Ladders

These durable, lightweight, multipurpose ladders are perfect for homes, offices, schools, and industrial warehouses. Folds up to a 3" profile for convenient storage in closets and other tight spaces. Extra wide anti-slip step heights are 9", 18", and 27". A locking safety latch ensures a user's safety when climbing. Steel construction with baked-in powder-coated toughness.

| MODEL NUMBER       | NO. OF STEPS | OVERALL SIZE (W x D x H)*   | OVERALL SIZE (W x D x H)**   | UNIFORM CAPACITY | WEIGHT (POUND) |
|--------------------|--------------|---|--|------------------|----------------|
| FSL-2 <sup>Ⓢ</sup> | 2            | 18" x 20" x 35"   | 18" x 2 <sup>1</sup> / <sub>2</sub> " x 38 <sup>1</sup> / <sub>2</sub> " | 200 lb.          | 14             |
| FSL-3 <sup>Ⓢ</sup> | 3            | 19" x 26 <sup>3</sup> / <sub>4</sub> " x 41 <sup>1</sup> / <sub>4</sub> " | 19" x 2" x 44 <sup>1</sup> / <sub>2</sub> "                              | 200 lb.          | 15             |

\*WHEN IN USE / \*\*FOLDED



## Serrated Steel Fold-Up Steps

Easily rotate step to vertical position when not in use. Step is steel with powder coat blue finish and has a serrated surface for traction. Two (2) 7/16" diameter mounting holes included. Fasteners are not included. Available in manual or spring loaded design. Baked-in powder-coated toughness.

| MODEL NUMBER            | DESCRIPTION         | STEP SIZE (W x D)  | UNIFORM CAPACITY | WEIGHT (POUND) |
|-------------------------|---------------------|--|------------------|----------------|
| SFS-149 <sup>Ⓢ</sup>    | MANUAL FOLD-UP STEP | 13 <sup>11</sup> / <sub>16</sub> " x 9 <sup>1</sup> / <sub>2</sub> " | 350 lb.          | 11             |
| SFS-149-SL <sup>Ⓢ</sup> | SPRING LOADED STEP  | 13 <sup>11</sup> / <sub>16</sub> " x 9 <sup>1</sup> / <sub>2</sub> " | 350 lb.          | 11             |





model ASP-48-HR

### Adjustable Step Stands with Handrail

The Adjustable Step-Mate Stands can be used as either a comfortable worker platform or a semi-permanent step. The serrated surface provides extra traction to reduce the potential for slipping. Individual step depth is 11<sup>3</sup>/<sub>4</sub>". Models feature two (2) bolt-on handrails for added stability during use. Handrail measure 20<sup>1</sup>/<sub>4</sub>"D x 40<sup>7</sup>/<sub>8</sub>"H when installed. The legs adjust individually, by screwing them into or out of the leg base, so the unit can be leveled on uneven floors. Each leg fitted with rubber tip for better grip. Uniform capacity is 500 pounds. The unit has a welded construction with baked-in powder-coated toughness.

| MODEL NUMBER | OVERALL SIZE (W x D)  | LOWER STEP HEIGHT                     | TOP STEP HEIGHT                         | WEIGHT (POUND) |
|--------------|---|---------------------------------------|---|----------------|
| ASP-24-HR    | 25 <sup>15</sup> / <sub>16</sub> " x 22 <sup>7</sup> / <sub>8</sub> " | 6" TO 8 <sup>1</sup> / <sub>4</sub> " | 13" TO 15 <sup>1</sup> / <sub>4</sub> " | 98             |
| ASP-36-HR    | 38 <sup>3</sup> / <sub>16</sub> " x 22 <sup>7</sup> / <sub>8</sub> "  | 6" TO 8 <sup>1</sup> / <sub>4</sub> " | 13" TO 15 <sup>1</sup> / <sub>4</sub> " | 110            |
| ASP-48-HR    | 50 <sup>1</sup> / <sub>2</sub> " x 22 <sup>7</sup> / <sub>8</sub> "   | 6" TO 8 <sup>1</sup> / <sub>4</sub> " | 13" TO 15 <sup>1</sup> / <sub>4</sub> " | 122            |



### Container Step Platform

The Container Step Platform is used to lighten the burden of hand-unloading containers. The 22<sup>3</sup>/<sub>8</sub>"W x 22<sup>3</sup>/<sub>8</sub>"D x 46<sup>5</sup>/<sub>16</sub>"H dual-coated railings help support your hips. The Platform has an aluminum anti-slip floor featuring deep ribbed plate. It has no sharp corners and is easy to maneuver due to smooth working ball bearings. The 4" non-marking polypropylene swivel spring loaded casters with rubber edges stabilize the platform when weight is added.

| MODEL NUMBER | BOTTOM STEP (W x L x H)  | TOP STEP (W x L x H)   | UNIFORM CAPACITY | WEIGHT (POUND) |
|--------------|--|--|------------------|----------------|
| CUP-3131     | 29 <sup>7</sup> / <sub>16</sub> " x 29 <sup>7</sup> / <sub>16</sub> " x 8 <sup>1</sup> / <sub>16</sub> " | 20 <sup>7</sup> / <sub>8</sub> " x 20 <sup>7</sup> / <sub>8</sub> " x 15 <sup>13</sup> / <sub>16</sub> " | 485 lb.          | 106            |



model LAD-DD-18-4-G



model LAD-DD-P-18-4-G

### Double Sided Step Ladders

These unique Double Sided Step Ladders offer more versatility. The steps are made from perforated steel or grip strut steel. The base includes four (4) feet with rubber tips to protect the floor. Portable units have four (4) spring loaded casters. Individual steps are either 17"W, 24"W, or 30<sup>1</sup>/<sub>4</sub>"W x 7"D with the top step measuring 14"D. Steps are spaced 10" apart. Uniform capacity 350 pounds. Welded steel construction with a baked-in powder-coated toughness.

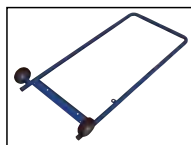
| VERTICAL STEPS         | TOP STEP (W x L)                         | TOP STEP HEIGHT | OVERALL SIZE (W x D x H)   | UNIFORM CAPACITY | WEIGHT (POUND) | MODEL NUMBER    |                 |
|------------------------|--|-----------------|--|------------------|----------------|-----------------|-----------------|
|                        |  |                 |  |                  |                | PERFORATED      | GRIP STRUT      |
| <b>WITHOUT CASTERS</b> |  |                 |  |                  |                |                 |                 |
| 2                      | 16 <sup>13</sup> / <sub>16</sub> " x 14" | 20"             | 19 <sup>5</sup> / <sub>16</sub> " x 32 <sup>1</sup> / <sub>16</sub> " x 20"  | 350 lb.          | 75             | LAD-DD-18-2-P   | LAD-DD-18-2-G   |
| 3                      | 16 <sup>13</sup> / <sub>16</sub> " x 14" | 30"             | 19 <sup>5</sup> / <sub>16</sub> " x 48 <sup>13</sup> / <sub>16</sub> " x 30" | 350 lb.          | 90             | LAD-DD-18-3-P   | LAD-DD-18-3-G   |
| 4                      | 16 <sup>13</sup> / <sub>16</sub> " x 14" | 40"             | 19 <sup>5</sup> / <sub>16</sub> " x 65 <sup>9</sup> / <sub>16</sub> " x 40"  | 350 lb.          | 126            | LAD-DD-18-4-P   | LAD-DD-18-4-G   |
| 2                      | 23 <sup>9</sup> / <sub>16</sub> " x 14"  | 20"             | 26 <sup>1</sup> / <sub>16</sub> " x 32 <sup>1</sup> / <sub>16</sub> " x 20"  | 350 lb.          | 84             | LAD-DD-26-2-P   | LAD-DD-26-2-G   |
| 3                      | 23 <sup>9</sup> / <sub>16</sub> " x 14"  | 30"             | 26 <sup>1</sup> / <sub>16</sub> " x 48 <sup>13</sup> / <sub>16</sub> " x 30" | 350 lb.          | 110            | LAD-DD-26-3-P   | LAD-DD-26-3-G   |
| 4                      | 23 <sup>9</sup> / <sub>16</sub> " x 14"  | 40"             | 26 <sup>1</sup> / <sub>16</sub> " x 65 <sup>9</sup> / <sub>16</sub> " x 40"  | 350 lb.          | 126            | LAD-DD-26-4-P   | LAD-DD-26-4-G   |
| 2                      | 30 <sup>1</sup> / <sub>4</sub> " x 14"   | 20"             | 32 <sup>3</sup> / <sub>4</sub> " x 32 <sup>1</sup> / <sub>16</sub> " x 20"   | 350 lb.          | 94             | LAD-DD-32-2-P   | LAD-DD-32-2-G   |
| 3                      | 30 <sup>1</sup> / <sub>4</sub> " x 14"   | 30"             | 32 <sup>3</sup> / <sub>4</sub> " x 48 <sup>13</sup> / <sub>16</sub> " x 30"  | 350 lb.          | 126            | LAD-DD-32-3-P   | LAD-DD-32-3-G   |
| 4                      | 30 <sup>1</sup> / <sub>4</sub> " x 14"   | 40"             | 32 <sup>3</sup> / <sub>4</sub> " x 65 <sup>9</sup> / <sub>16</sub> " x 40"   | 350 lb.          | 165            | LAD-DD-32-4-P   | LAD-DD-32-4-G   |
| <b>WITH CASTERS</b>    |  |                 |  |                  |                |                 |                 |
| <b>PERFORATED</b>      |  |                 |  |                  |                |                 |                 |
| 2                      | 16 <sup>13</sup> / <sub>16</sub> " x 14" | 20"             | 19 <sup>5</sup> / <sub>16</sub> " x 32 <sup>1</sup> / <sub>16</sub> " x 20"  | 350 lb.          | 81             | LAD-DD-P-18-2-P | LAD-DD-P-18-2-G |
| 3                      | 16 <sup>13</sup> / <sub>16</sub> " x 14" | 30"             | 19 <sup>5</sup> / <sub>16</sub> " x 48 <sup>13</sup> / <sub>16</sub> " x 30" | 350 lb.          | 100            | LAD-DD-P-18-3-P | LAD-DD-P-18-3-G |
| 4                      | 16 <sup>13</sup> / <sub>16</sub> " x 14" | 40"             | 19 <sup>5</sup> / <sub>16</sub> " x 65 <sup>9</sup> / <sub>16</sub> " x 40"  | 350 lb.          | 132            | LAD-DD-P-18-4-P | LAD-DD-P-18-4-G |
| <b>GRIP STRUT</b>      |  |                 |  |                  |                |                 |                 |
| 2                      | 23 <sup>9</sup> / <sub>16</sub> " x 14"  | 20"             | 26 <sup>1</sup> / <sub>16</sub> " x 32 <sup>1</sup> / <sub>16</sub> " x 20"  | 350 lb.          | 90             | LAD-DD-P-26-2-P | LAD-DD-P-26-2-G |
| 3                      | 23 <sup>9</sup> / <sub>16</sub> " x 14"  | 30"             | 26 <sup>1</sup> / <sub>16</sub> " x 48 <sup>13</sup> / <sub>16</sub> " x 30" | 350 lb.          | 116            | LAD-DD-P-26-3-P | LAD-DD-P-26-3-G |
| 4                      | 23 <sup>9</sup> / <sub>16</sub> " x 14"  | 40"             | 26 <sup>1</sup> / <sub>16</sub> " x 65 <sup>9</sup> / <sub>16</sub> " x 40"  | 350 lb.          | 150            | LAD-DD-P-26-4-P | LAD-DD-P-26-4-G |
| 2                      | 30 <sup>1</sup> / <sub>4</sub> " x 14"   | 20"             | 32 <sup>3</sup> / <sub>4</sub> " x 32 <sup>1</sup> / <sub>16</sub> " x 20"   | 350 lb.          | 100            | LAD-DD-P-32-2-P | LAD-DD-P-32-2-G |
| 3                      | 30 <sup>1</sup> / <sub>4</sub> " x 14"   | 30"             | 32 <sup>3</sup> / <sub>4</sub> " x 48 <sup>13</sup> / <sub>16</sub> " x 30"  | 350 lb.          | 132            | LAD-DD-P-32-3-P | LAD-DD-P-32-3-G |
| 4                      | 30 <sup>1</sup> / <sub>4</sub> " x 14"   | 40"             | 32 <sup>3</sup> / <sub>4</sub> " x 65 <sup>9</sup> / <sub>16</sub> " x 40"   | 350 lb.          | 171            | LAD-DD-P-32-4-P | LAD-DD-P-32-4-G |





## Adjustable Step-Mate Stands

Our Adjustable Step-Mate Stands can be used as either a comfortable worker platform or a semi-permanent step. Individual step size is 11¾" deep, aluminum construction 11⅞" deep. Grip strut surface ensures safe footing. Legs adjust individually by screwing them into or out of the leg base. Welded construction. Uniform capacity 500 pounds. Steel units feature a yellow baked-in powder-coated toughness.



Bolt-on portability kit, allows Step-Mate Stands to be tilted and moved. Handle also serves as a single side hand rail for extra stability and balance while standing on top step. Includes handle and two rigid wheels. Steel construction with painted finish. Fits on (2) two step models that measures 24", 36" and 48" wide units.

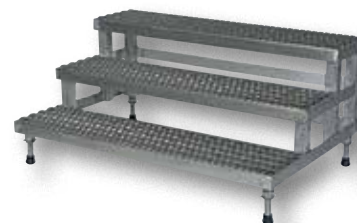
model ASP-PORT



model ASP-48



model ASP-48-3



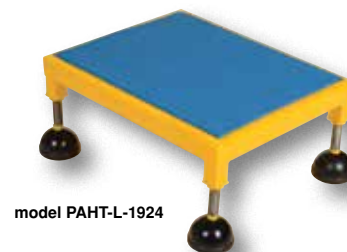
model ASP-48-3-A

| MODEL NUMBER                        | OVERALL SIZE (W x D)  | NUMBER OF STEPS | LOWER STEP HEIGHT RANGE | MIDDLE STEP HEIGHT RANGE | UPPER STEP HEIGHT RANGE | WEIGHT (POUND) |
|-------------------------------------|---|-----------------|-------------------------|--------------------------|-------------------------|----------------|
| <b>STEEL CONSTRUCTION</b>           |   |                 |                         |                          |                         |                |
| ASP-24                              | 23 <sup>13</sup> / <sub>16</sub> " x 22 <sup>7</sup> / <sub>8</sub> " | 2               | 6" to 8¼"               | ---                      | 13" to 15¼"             | 41             |
| ASP-36                              | 36 <sup>3</sup> / <sub>16</sub> " x 22 <sup>7</sup> / <sub>8</sub> "  | 2               | 6" to 8¼"               | ---                      | 13" to 15¼"             | 49             |
| ASP-48                              | 48½" x 22 <sup>7</sup> / <sub>8</sub> "                               | 2               | 6" to 8¼"               | ---                      | 13" to 15¼"             | 59             |
| ASP-60                              | 59¾" x 22 <sup>7</sup> / <sub>8</sub> "                               | 2               | 6" to 8¼"               | ---                      | 13" to 15¼"             | 101            |
| ASP-72                              | 72 <sup>1</sup> / <sub>16</sub> " x 22 <sup>7</sup> / <sub>8</sub> "  | 2               | 6" to 8¼"               | ---                      | 13" to 15¼"             | 126            |
| ASP-24-3                            | 23 <sup>13</sup> / <sub>16</sub> " x 33 <sup>7</sup> / <sub>8</sub> " | 3               | 6" to 8¼"               | 13" to 15¼"              | 20" to 22¼"             | 60             |
| ASP-36-3                            | 36 <sup>3</sup> / <sub>16</sub> " x 33 <sup>7</sup> / <sub>8</sub> "  | 3               | 6" to 8¼"               | 13" to 15¼"              | 20" to 22¼"             | 109            |
| ASP-48-3                            | 48½" x 33 <sup>7</sup> / <sub>8</sub> "                               | 3               | 6" to 8¼"               | 13" to 15¼"              | 20" to 22¼"             | 126            |
| <b>STAINLESS STEEL CONSTRUCTION</b> |   |                 |                         |                          |                         |                |
| ASP-24-SS                           | 23¾" x 22 <sup>7</sup> / <sub>8</sub> "                               | 2               | 6¼" to 8¼"              | ---                      | 13¼" to 15¼"            | 38             |
| ASP-36-SS                           | 35¾" x 22 <sup>7</sup> / <sub>8</sub> "                               | 2               | 6¼" to 8¼"              | ---                      | 13¼" to 15¼"            | 58             |
| ASP-48-SS                           | 47¾" x 22 <sup>7</sup> / <sub>8</sub> "                               | 2               | 6¼" to 8¼"              | ---                      | 13¼" to 15¼"            | 82             |
| ASP-60-SS                           | 59¾" x 22 <sup>7</sup> / <sub>8</sub> "                               | 2               | 6¼" to 8¼"              | ---                      | 13¼" to 15¼"            | 112            |
| ASP-72-SS                           | 71¾" x 22 <sup>7</sup> / <sub>8</sub> "                               | 2               | 6¼" to 8¼"              | ---                      | 13¼" to 15¼"            | 124            |
| ASP-24-3-SS                         | 23¾" x 33 <sup>7</sup> / <sub>8</sub> "                               | 3               | 6¼" to 8¼"              | 13¼" to 15¼"             | 20¼" to 22¼"            | 61             |
| ASP-36-3-SS                         | 35¾" x 33 <sup>7</sup> / <sub>8</sub> "                               | 3               | 6¼" to 8¼"              | 13¼" to 15¼"             | 20¼" to 22¼"            | 65             |
| ASP-48-3-SS                         | 47¾" x 33 <sup>7</sup> / <sub>8</sub> "                               | 3               | 6¼" to 8¼"              | 13¼" to 15¼"             | 20¼" to 22¼"            | 113            |
| <b>ALUMINUM CONSTRUCTION</b>        |   |                 |                         |                          |                         |                |
| ASP-24-A                            | 24 <sup>1</sup> / <sub>8</sub> " x 22¾"                               | 2               | 6" to 7½"               | ---                      | 13" to 14½"             | 24             |
| ASP-36-A                            | 36 <sup>1</sup> / <sub>8</sub> " x 22¾"                               | 2               | 6" to 7½"               | ---                      | 13" to 14½"             | 35             |
| ASP-48-A                            | 48 <sup>1</sup> / <sub>8</sub> " x 22¾"                               | 2               | 6" to 7½"               | ---                      | 13" to 14½"             | 44             |
| ASP-60-A                            | 60 <sup>1</sup> / <sub>8</sub> " x 22¾"                               | 2               | 6" to 7½"               | ---                      | 13" to 14½"             | 66             |
| ASP-72-A                            | 72 <sup>1</sup> / <sub>8</sub> " x 22¾"                               | 2               | 6" to 7½"               | ---                      | 13" to 14½"             | 87             |
| ASP-24-3-A                          | 24 <sup>1</sup> / <sub>8</sub> " x 33 <sup>5</sup> / <sub>8</sub> "   | 3               | 6" to 7½"               | 13" to 14½"              | 20" to 21½"             | 51             |
| ASP-36-3-A                          | 36 <sup>1</sup> / <sub>8</sub> " x 33 <sup>5</sup> / <sub>8</sub> "   | 3               | 6" to 7½"               | 13" to 14½"              | 20" to 21½"             | 55             |
| ASP-48-3-A                          | 48 <sup>1</sup> / <sub>8</sub> " x 33 <sup>5</sup> / <sub>8</sub> "   | 3               | 6" to 7½"               | 13" to 14½"              | 20" to 21½"             | 103            |
| <b>PORTABILITY OPTIONS</b>          |   |                 |                         |                          |                         |                |
| ASP-PORT                            | BOLT-ON PORTABILITY KIT for ASP-24, ASP-36 & ASP-48 units             |                 |                         |                          |                         | 12             |

## Portable Adjustable Height Worker Stands

Independently adjustable height legs may be set to level unit on uneven floors. Ergonomic matting on top surface provides a comfortable standing surface. Each leg is fitted with a spring-loaded swivel caster with a protective steel caster cup with rubber bottom ring. All welded steel construction with baked-in powder-coated toughness. Uniform capacity is 500 pounds each. Complies with OSHA 1910.26 specifications.

|                    | DECK SIZE (W x L) | SERVICE RANGE | MODEL NUMBER | WEIGHT (POUND)   | MODEL NUMBER              | WEIGHT (POUND) |
|--------------------|-------------------|---------------|--------------|------------------|---------------------------|----------------|
|                    |                   |               |              | SERRATED SURFACE | ERGONOMIC MATTING SURFACE |                |
| STEEL CONSTRUCTION | 19" x 24"         | 8¾" x 12"     | PAHW-L-1924  | 45               | PAHT-L-1924               | 41             |
|                    | 24" x 24"         | 8¾" x 12"     | PAHW-L-2424  | 52               | PAHT-L-2424               | 47             |
|                    | 19" x 36"         | 8¾" x 12"     | PAHW-L-1936  | 59               | PAHT-L-1936               | 52             |
|                    | 24" x 36"         | 8¾" x 12"     | PAHW-L-2436  | 66               | PAHT-L-2436               | 60             |
|                    | 19" x 48"         | 8¾" x 12"     | PAHW-L-1948  | 79               | PAHT-L-1948               | 70             |
|                    | 24" x 48"         | 8¾" x 12"     | PAHW-L-2448  | 87               | PAHT-L-2448               | 81             |
|                    | 19" x 24"         | 11½" x 15"    | PAHW-H-1924  | 47               | PAHT-H-1924               | 43             |
|                    | 24" x 24"         | 11½" x 15"    | PAHW-H-2424  | 54               | PAHT-H-2424               | 49             |
|                    | 19" x 36"         | 11½" x 15"    | PAHW-H-1936  | 60               | PAHT-H-1936               | 54             |
|                    | 24" x 36"         | 11½" x 15"    | PAHW-H-2436  | 67               | PAHT-H-2436               | 62             |
|                    | 19" x 48"         | 11½" x 15"    | PAHW-H-1948  | 82               | PAHT-H-1948               | 73             |
|                    | 24" x 48"         | 11½" x 15"    | PAHW-H-2448  | 90               | PAHT-H-2448               | 84             |

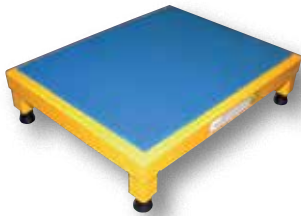


model PAHT-L-1924

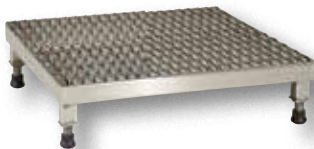




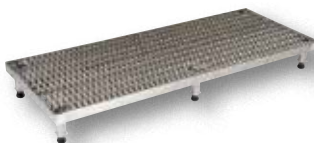
SERRATED DECK



ERGO-MATTING DECK



STAINLESS STEEL



ALUMINUM WITH GRIP STRUT



ALUMINUM WITH ERGO MATTING



THREADED SCREW LEGS ARE STANDARD



Custom Finish Available

## Adjustable Work-Mate Stands

Minimizes fatigue by elevating workers to heights that are comfortable and ergonomically correct. Especially useful when multiple shift employees operate the same piece of machinery. Grip strut style platforms ensure safe footing in most wet environments. Ergonomic matting deck style provides comfort for the operator who stands all day. The height of each leg can be adjusted individually to ensure proper working height. All sizes have four (4) legs except the 60", 72", and 96" long models which have six legs. Uniform capacity is 500 pounds each. Welded construction. Steel units feature a yellow baked-in powder-coated toughness.



|                              | DECK SIZE (W x L) | SERVICE RANGE | MODEL NUMBER  | WEIGHT (POUND) | MODEL NUMBER  | WEIGHT (POUND) |
|------------------------------|-------------------|---------------|---------------|----------------|---------------|----------------|
|                              |                   |               |               |                |               |                |
| STEEL CONSTRUCTION           | 19" x 24"         | 6¾" to 8¾"    | AHW-L-1924    | 27             | AHT-L-1924    | 28             |
|                              | 24" x 24"         | 6¾" to 8¾"    | AHW-L-2424    | 33             | AHT-L-2424    | 34             |
|                              | 19" x 36"         | 6¾" to 8¾"    | AHW-L-1936    | 39             | AHT-L-1936    | 38             |
|                              | 24" x 36"         | 6¾" to 8¾"    | AHW-L-2436    | 42             | AHT-L-2436    | 45             |
|                              | 19" x 48"         | 6¾" to 8¾"    | AHW-L-1948    | 44             | AHT-L-1948    | 48             |
|                              | 24" x 48"         | 6¾" to 8¾"    | AHW-L-2448    | 50             | AHT-L-2448    | 57             |
|                              | 24" x 60"         | 6¾" to 8¾"    | AHW-L-2460    | 64             | AHT-L-2460    | 111            |
|                              | 24" x 72"         | 6¾" to 8¾"    | AHW-L-2472    | 101            | AHT-L-2472    | 127            |
|                              | 24" x 96"         | 6¾" to 8¾"    | AHW-L-2496    | 120            | AHT-L-2496    | 152            |
|                              | 19" x 24"         | 10½" to 16½"  | AHW-H-1924    | 36             | AHT-H-1924    | 35             |
|                              | 24" x 24"         | 10½" to 16½"  | AHW-H-2424    | 37             | AHT-H-2424    | 37             |
|                              | 19" x 36"         | 10½" to 16½"  | AHW-H-1936    | 46             | AHT-H-1936    | 46             |
|                              | 24" x 36"         | 10½" to 16½"  | AHW-H-2436    | 51             | AHT-H-2436    | 54             |
|                              | 19" x 48"         | 10½" to 16½"  | AHW-H-1948    | 54             | AHT-H-1948    | 58             |
|                              | 24" x 48"         | 10½" to 16½"  | AHW-H-2448    | 64             | AHT-H-2448    | 64             |
| 24" x 60"                    | 10½" to 16½"      | AHW-H-2460    | 104           | AHT-H-2460     | 124           |                |
| 24" x 72"                    | 10½" to 16½"      | AHW-H-2472    | 130           | AHT-H-2472     | 128           |                |
| 24" x 96"                    | 10½" to 16½"      | AHW-H-2496    | 146           | AHT-H-2496     | 170           |                |
| STAINLESS STEEL CONSTRUCTION | 19" x 24"         | 6¾" to 8¾"    | AHW-L-1924-SS | 30             | AHT-L-1924-SS | 35             |
|                              | 24" x 24"         | 6¾" to 8¾"    | AHW-L-2424-SS | 39             | AHT-L-2424-SS | 36             |
|                              | 19" x 36"         | 6¾" to 8¾"    | AHW-L-1936-SS | 45             | AHT-L-1936-SS | 41             |
|                              | 24" x 36"         | 6¾" to 8¾"    | AHW-L-2436-SS | 50             | AHT-L-2436-SS | 48             |
|                              | 19" x 48"         | 6¾" to 8¾"    | AHW-L-1948-SS | 53             | AHT-L-1948-SS | 51             |
|                              | 24" x 48"         | 6¾" to 8¾"    | AHW-L-2448-SS | 59             | AHT-L-2448-SS | 57             |
|                              | 24" x 60"         | 6¾" to 8¾"    | AHW-L-2460-SS | 65             | AHT-L-2460-SS | 112            |
|                              | 24" x 72"         | 6¾" to 8¾"    | AHW-L-2472-SS | 115            | AHT-L-2472-SS | 132            |
|                              | 24" x 96"         | 6¾" to 8¾"    | AHW-L-2496-SS | 124            | AHT-L-2496-SS | 158            |
|                              | 19" x 24"         | 10½" to 16½"  | AHW-H-1924-SS | 37             | AHT-H-1924-SS | 37             |
|                              | 24" x 24"         | 10½" to 16½"  | AHW-H-2424-SS | 40             | AHT-H-2424-SS | 40             |
|                              | 19" x 36"         | 10½" to 16½"  | AHW-H-1936-SS | 47             | AHT-H-1936-SS | 57             |
|                              | 24" x 36"         | 10½" to 16½"  | AHW-H-2436-SS | 57             | AHT-H-2436-SS | 63             |
|                              | 19" x 48"         | 10½" to 16½"  | AHW-H-1948-SS | 58             | AHT-H-1948-SS | 55             |
|                              | 24" x 48"         | 10½" to 16½"  | AHW-H-2448-SS | 65             | AHT-H-2448-SS | 68             |
| 24" x 60"                    | 10½" to 16½"      | AHW-H-2460-SS | 111           | AHT-H-2460-SS  | 130           |                |
| 24" x 72"                    | 10½" to 16½"      | AHW-H-2472-SS | 135           | AHT-H-2472-SS  | 132           |                |
| 24" x 96"                    | 10½" to 16½"      | AHW-H-2496-SS | 136           | AHT-H-2496-SS  | 175           |                |
| ALUMINUM CONSTRUCTION        | 19" x 24"         | 5¾" to 7¾"    | AHW-L-1924-A  | 23             | AHT-L-1924-A  | 29             |
|                              | 24" x 24"         | 5¾" to 7¾"    | AHW-L-2424-A  | 26             | AHT-L-2424-A  | 34             |
|                              | 19" x 36"         | 5¾" to 7¾"    | AHW-L-1936-A  | 36             | AHT-L-1936-A  | 38             |
|                              | 24" x 36"         | 5¾" to 7¾"    | AHW-L-2436-A  | 33             | AHT-L-2436-A  | 46             |
|                              | 19" x 48"         | 5¾" to 7¾"    | AHW-L-1948-A  | 45             | AHT-L-1948-A  | 50             |
|                              | 24" x 48"         | 5¾" to 7¾"    | AHW-L-2448-A  | 41             | AHT-L-2448-A  | 57             |
|                              | 24" x 60"         | 5¾" to 7¾"    | AHW-L-2460-A  | 52             | AHT-L-2460-A  | 78             |
|                              | 24" x 72"         | 5¾" to 7¾"    | AHW-L-2472-A  | 60             | AHT-L-2472-A  | 88             |
|                              | 24" x 96"         | 5¾" to 7¾"    | AHW-L-2496-A  | 75             | AHT-L-2496-A  | 112            |
|                              | 19" x 24"         | 9½" to 15½"   | AHW-H-1924-A  | 29             | AHT-H-1924-A  | 40             |
|                              | 24" x 24"         | 9½" to 15½"   | AHW-H-2424-A  | 32             | AHT-H-2424-A  | 43             |
|                              | 19" x 36"         | 9½" to 15½"   | AHW-H-1936-A  | 42             | AHT-H-1936-A  | 55             |
|                              | 24" x 36"         | 9½" to 15½"   | AHW-H-2436-A  | 39             | AHT-H-2436-A  | 61             |
|                              | 19" x 48"         | 9½" to 15½"   | AHW-H-1948-A  | 51             | AHT-H-1948-A  | 63             |
|                              | 24" x 48"         | 9½" to 15½"   | AHW-H-2448-A  | 47             | AHT-H-2448-A  | 65             |
| 24" x 60"                    | 9½" to 15½"       | AHW-H-2460-A  | 61            | AHT-H-2460-A   | 87            |                |
| 24" x 72"                    | 9½" to 15½"       | AHW-H-2472-A  | 69            | AHT-H-2472-A   | 98            |                |
| 24" x 96"                    | 9½" to 15½"       | AHW-H-2496-A  | 84            | AHT-H-2496-A   | 121           |                |

**CUSTOMER INFORMATION**

CONTACT: \_\_\_\_\_  
 COMPANY: \_\_\_\_\_  
 PHONE: \_\_\_\_\_  
 EMAIL: \_\_\_\_\_

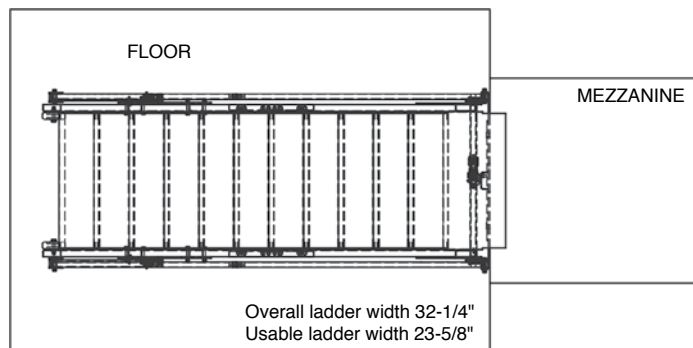
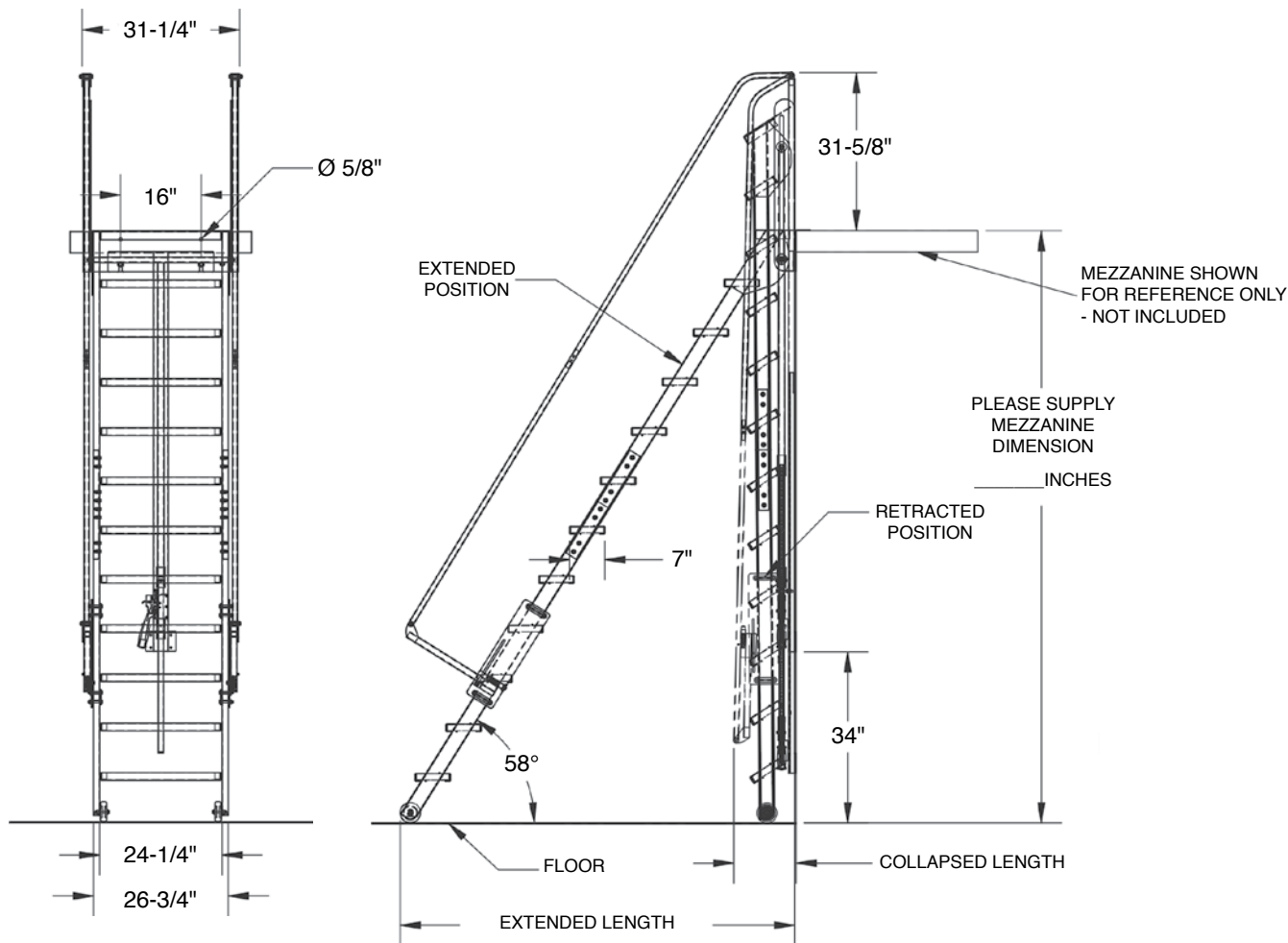
**SPECIFICATIONS**

MEZZANINE HEIGHT: \_\_\_\_\_ Available for mezzanine heights from 60" to 132"

**SERIES LAD-FM  
 FACE MOUNTED/  
 RETRACTABLE  
 MEZZANINE LADDER**

**SURVEY SHEET**

**INDUSTRIAL & COMMERCIAL LADDERS**



**VESTIL MANUFACTURING**

2999 North Wayne Street, Post Office Box 507  
 Angola, Indiana 46703 USA  
 Phone (260) 665-7586 • Fax (260) 665-1339  
 www.vestil.com

- info@vestil.com - general company inquiries and price quotes
- status@vestil.com - check order status
- freight@vestil.com - freight quotes
- orders@vestil.com - remit purchase orders
- parts@vestil.com - replacement parts
- tech@vestil.com - technical product support & troubleshooting

**CUSTOMER INFORMATION**

CONTACT: \_\_\_\_\_  
 COMPANY: \_\_\_\_\_  
 PHONE: \_\_\_\_\_  
 EMAIL: \_\_\_\_\_

**PLATFORM SPECIFICATIONS**

NOT  
CRITICAL

OVERALL WIDTH: \_\_\_\_\_  
 OVERALL LENGTH: \_\_\_\_\_  
 USABLE WIDTH: \_\_\_\_\_  
 USABLE LENGTH: \_\_\_\_\_  
 USABLE HEIGHT: \_\_\_\_\_  
 NUMBER OF ENTRIES/EXITS: \_\_\_\_\_  
 DO YOU REQUIRE ANCHORS: \_\_\_\_\_

**INCLUDE ANY INFORMATION ABOUT LAYOUT:**

\_\_\_\_\_  
 \_\_\_\_\_  
 \_\_\_\_\_  
 \_\_\_\_\_

**APPLICATION / LOADING INFO:**

\_\_\_\_\_  
 \_\_\_\_\_  
 \_\_\_\_\_  
 \_\_\_\_\_

**APPLICATION INFORMATION:**

NUMBER OF SHIFTS: \_\_\_\_\_  
 SPECIAL TEMP. REQUIREMENTS: \_\_\_\_\_  
 SIDE LOADING: \_\_\_\_\_  
 SPECIAL LOADING & UNLOADING REQUIREMENTS: \_\_\_\_\_

**ADDITIONAL NOTES:**

\_\_\_\_\_  
 \_\_\_\_\_  
 \_\_\_\_\_  
 \_\_\_\_\_

**QUOTE OPTIONS:**

EXACTLY AS SPECIFIED  
 QUICKEST TO SHIP  
 CHEAPEST / CLOSEST TO VESTIL STANDARD

REQUESTED DELIVERY DATE: \_\_\_\_\_

**SERIES MP  
 MODULAR STEEL WORK  
 PLATFORM SYSTEM**

**SURVEY SHEET**



**CONFIGURATIONS:**

- STRAIGHT
- "L-STYLE"
- OTHER/ DESCRIBE/DRAW:



**VESTIL MANUFACTURING**

2999 North Wayne Street, Post Office Box 507  
 Angola, Indiana 46703 USA  
 Phone (260) 665-7586 • Fax (260) 665-1339  
 www.vestil.com

info@vestil.com - general company inquiries and price quotes  
 status@vestil.com - check order status  
 freight@vestil.com - freight quotes  
 orders@vestil.com - remit purchase orders  
 parts@vestil.com - replacement parts  
 tech@vestil.com - technical product support & troubleshooting