

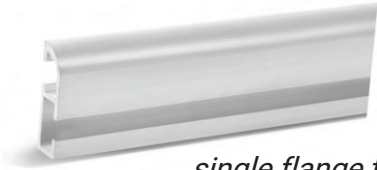


# LED RETAINER TRACK OPTIONS

Unpainted 6061 Aluminum, easy to cut and powder coat. Sold in 5ft sections. Pre-Drilled Service Available.

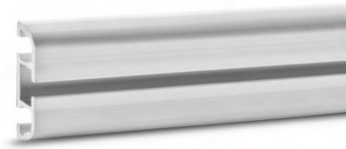
*Commonly Used on Rolling Steel Doors*

## TRACKSNG5



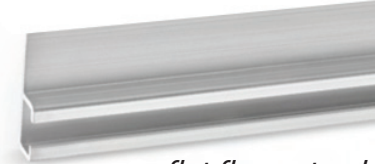
*single flange track  
(ships by default)*

## TRACKDUAL5



*dual flange track*

## TRACKSNG5-CLASSIC



*flat flange track*

*Commonly Used on Sectional Doors*

## TRACK905



*90° track with 1" extension  
and 1" mounting area*

## TRACK995



*90° track with  
1" mounting area*

*Commonly Used on Right-Hand  
Side of Doors with Vehicular Traffic*

## TRACK455



*45° track for angled or indirect lighting*

# NEMA BOX OPTIONS

High-Quality 8"x6"x4" NEMA Enclosure to Protect Electronics.

## NEMABOX-8X6X4-CTRL-INSTALLED



Includes pre-installed LED controller and power supply. 480-110v transformer available.

## NEMABOX-TIMER-PRE-ANNOUNCE



Includes pre-installed LED controller and power supply. Also includes (2) programmable timers for timer-based control of overhead door close and flashing-amber lights (pre-announce).

# OTHER AVAILABLE UPGRADES AND ACCESSORIES

## High-Brightness LEDs

30% brighter than our other LEDs. Available in 12VDC and 24VDC (specific lengths).

## AC Signal Converters

For LED Controller to use A/C input signals.

## LED Lengths (cuttable)

5', 10', 15', 20'

## LED Wiring Harnesses

Marine-grade tinned wire 22-4 conductors. Available in 4', 10', 20', 30', 40', 60', 80', 100'

## Horns

Available with or without flashing red light.

## Track Tape Kit

High-strength double-sided tape attaches to LED retainer track for easy installation.

